

# Izigi ZABALIMI

Nov. 2020 - Feb. 2021

The official *NEWSLETTER* of SAFDA



**RV PRICE NOV. 2020:** R4 4 912,55 (R115,09 Increase vs September 2020 Price). D Factor 0.430984



## SAFDA nominates Ms Fubbs as **The New SASA Vice Chairperson**

By Thandokwakhe Sibiya- *Strategic Support Executive*

**S**AFDA wishes to welcome and congratulate Ms Joanmariae Fubbs who was nominated by SAFDA to be voted as the Vice Chairperson of the South African Sugar Association (SASA). At the Special Meeting of the SASA Delegates that was held this afternoon, the Delegates of SASA unanimously voted for her to assume this new role. "We are very excited to be joined by Mama Fubbs in the industry that is busy transforming and becoming an industry of the future, which will be characterised by inclusivity, making sure that the under resourced small-scale and land reform farmers are taken along. Mama Fubbs has demonstrated her commitment to transformation." Said Dr Siyabonga Madlala, the Executive Chairperson of SAFDA.

SAFDA believes this appointment

augurs well for the industry which is in the process of implementing the Sugar Value Chain Master Plan and working to ensure that the sugar sector moves from being a sunset industry and to being a rising sector. Mama Fubbs brings with her wealth and depth of leadership experience. She particularly has in-depth insights into this regulated sector having been in charge of a parliamentary portfolio committee that was custodian of the Sugar Act and its Regulations. We hope to make more strides in bringing about much needed changes to our sector with her on board.

Mama Fubbs joins other women who are already in senior leadership roles within the industry association. SAFDA was the trailblazer in introducing women to leadership ranks of the industry. When we were recognised for the first time in

2018, we appointed Ms Lindiwe Hlubi, the Deputy Chairperson of SAFDA, into the role of the Vice Chairperson of SASA. It is now normal in the industry for women to occupy such high profile roles, especially with Ms Sindi Mabaso-Koyana who was also this year appointed by the industry into the role of the SASA Independent Chairperson.

Dr Madlala thanked Ms Hlubi for being a pioneer as the first woman to be in the Chairpersonship of the Sugar Association. He said "She was brave and took the bull by its horns. She represented us well within the industry. We have now asked her to come back home and help to build the organisation (SAFDA) which is growing in leaps and bounds. Her contributions to the industry will forever be celebrated and cherished"

### CONTENTS

**PAGE 4:** Mpumalanga growers under new leadership

**PAGE 10:** Dr Madlala visits USA

**PAGE 5:** Regulating the sugar sector for sustainability

**PAGE 6:** Agro-Processing here we come!

**PAGE 8:** Impact of COVID-19 on sugarcane farmers

**PAGE 9:** Women's Special Feature



# SAFDA pioneers novel restitution models in Melmoth

By Nondumiso Mlondo: *Media and Communications Practitioner*



The South African Farmers Development Association (SAFDA) entered into a Service Level Agreement (SLA) with the Department of Rural Development and Land Reform to provide various services to freehold farmers, small scale farmers and land reform beneficiaries. SAFDA has also entered into Co-Management Agreements with four communities in Melmoth. As part of the Co-Management Agreement, SAFDA is co-managing the farming operations and committed to providing governance support to all four projects. Melmoth has about 6800 hectares which consists of sugar cane, timber and avocados that are exported to various international destinations. The Commission on Restitution of Land Rights has restored land to five claimant communities in the Melmoth area, these properties were awarded

through a Court Order in 2019 and transfers of properties took place from March 2020 onwards. Four out of five of these communities have chosen to work with SAFDA as their strategic partner for the next 5-10 years through a co-management arrangement, those communities are Entembeni with 1 801 h/a, Emakhasaneni with 1 250 h/a, Entembeni Royal House with 1 433 h/a and Isizwe Sakwa-Dludla community trust with 1 122. h/a. Over and above the co-management agreement that SAFDA has with these communities, we have made available working capital, machinery and equipment so that they can be able to continue working and producing. The establishment of the Farm Management Services Company as an arm of the organization that will turn around farming operations for struggling farmers ensuring

that they have good quality crop which will attract the good price.

When communities or Trusts enter into partnerships, they are promised that there will be transfer of skills so that when contracts come to an end and partners leave, communities would be able to farm for themselves. SAFDA has been able to honour these promises made to the communities as we have a two-year graduate programme where several graduates are taken for skills training per community. SAFDA is also assisting the communities with various other enterprise development projects, namely,

- Community gardens supported by DARD
- Retail shops
- Weighbridge
- Livestock

## COMMUNITY PROFILE:

NAME OF THE PROJECT	HECTARES RESTORED	NO. OF HOUSEHOLDS
<ul style="list-style-type: none"> <li>• eNtembeni Community</li> <li>• eMakhasaneni Community</li> <li>• eNtembeni Royal House</li> <li>• Isizwe Sakwa-Dludla</li> </ul>	<ul style="list-style-type: none"> <li>• 1 801 hectares</li> <li>• 1 250 hectares</li> <li>• 1 433 hectares</li> <li>• 1 122 hectares</li> </ul>	<ul style="list-style-type: none"> <li>• 350 households</li> <li>• 99 households</li> <li>• 150 households</li> <li>• 66 households</li> </ul>

## COMMODITIES PER COMMUNITY

COMMODITIES	EMAKHASANENI	ENTEMBENI	ENTEMBENI ROYALE HOUSE	ISIZWE SAKWADLUDLA
SUGAR CANE (HA)	613	777	594	793
AVOCADO (HA)	68	121	80	54
TIMBER (HA)	96	513	306	62

# Chairman Dlakude: Decisive Leadership short-lived

Sfiso Mnguni- Grower Affairs Head



Chairman Vusi Dlakude

Sugar cane farmers across KwaZulu-Natal and Mpumalanga provinces will for a long time find it hard to live with reality that the decisive leadership of Chairman Vusi Dlakude is no more. The South African Farmers Development Association (SAFDA) recently bid farewell to one of its most loyal and disciplined cadres, Mr Vusi Peter Dlakude. Dlakude was born in Mdzuba (KaHoyi) in 1968 by his parents, Ester Nkosi and Mcoshwa Phineas Dlakude. He started his primary school education in 1974 KaHoyi Primary School and completed his high school education at Manzolwandle Secondary School eMgobodzi. In 1989 he got employed by the Department of Home Affairs and started working at Lebombo Border Post as Immigration Officer. In 1998 he took early retirement to start

his funeral parlor and sugar cane farming businesses. In 1998 he joined the ANC for which he is reported to have served as a loyal and disciplined member, who worked hard for the movement but was interested in any paid leadership role, though he assisted many comrades to climb the leadership ladder to the top. In 2017 Dlakude joined the South African farmers Development Association (SAFDA) in which he later served as one of additional members in the Komati Mill Area Committee (MAC). He emerged as the hidden treasure earlier in 2020 when SAFDA was faced with leadership chaos in Mpumalanga and was voted the new Chairperson of small-scale growers. At the time of his passing he served as a member of the Central Executive Committee of SAFDA. Working together



with his committee, Dlakude led some of the most difficult grower struggles to ensure that small scale growers get fair treatment from the industry and particularly funding from Akwandze Finance to fund their farming operations.

He served selflessly turning around the character of a committee which was being contaminated by tendencies of personal greed. He brought order where there were emerging tendencies of personal greed.

Chairman Dlakude will be dearly missed by all at SAFDA, while his legacy of decisive leadership is set to carry the organization through to greater heights.

# Mpumalanga Growers Under New Leadership

By Nondumiso Mlondo and Sifiso Mnguni



Following dramatic events of leadership chaos, sugar cane farmers in the Komati and Malalane have eventually landed themselves in the capable hands of their new leadership. The election of new leaders happened at the time of South Africa's National Lockdown to curb the spread of Covid-19.

The leadership which was initially elected using virtual platform earlier in the year, was later confirmed, added to and made

permanent in August 2020 for both land reform farmers and small scale growers respectively. Mr Moses Thumbathi of Matsamo Communal Property Association was voted as the Chairman of land reform farmers, while Mr Vusi Dlakude was elected as the Chairman of small scale growers. Sadly Dlakude could not live long enough to see the fruits of his decisive leadership, which he demonstrated when chatting the way to the new command. He

passed away in September 2020, leaving behind the legacy of a decisive character. May his soul rest in peace.

The SSG committee has a total of 22 members who represent all small scale growers in Komati and Malalane. Following Dlakude's death, SSG's have remained in the leadership of their Deputy Charirman, Mr Ernest Mashabane. Mashabane who is a renowned businessman in Nkomazi says farming needs people who are passionate and hardworking because success does not come overnight. "In order for history not to repeat itself we need to work hard be transparent and respect each other as the success of this committee depend on the current leadership working to the benefit of all growers" says Mashabane.

The Chairman of land reform growers, Mr Moses Thumbathi, says the new committee will do things differently as it poses a challenge to the new leadership to do better and be able to assist all land reform farmers. "We need more unity as the committee and that goes for both SSG committee and Land Reform, we are all under one banner of SAFDA. Working efficiently and honesty should be the order of business" says Thumbathi.

The election of the new committees has not only helped the growers of this province, but it has assisted SAFDA as an organisation to be able to operate competently with various groups and stakeholders in the province of Mpumalanga.



# Industry Updates

By Thandokwakhe Sibiya- Strategic Support Executive



## Regulating the sugar sector for sustainability

By Thandokwakhe Sibiya- Strategic Support Executive

### Sugar Master Plan

The industry has been dealing with some difficult issues and challenges that do not auger well for the future of the sector. Amongst these we can mention the Health Promotion Levy (HPL) charged on sugary beverage producers, that became effective from 1 April 2018. When the levy was introduced it forced industrial sugar customers in the beverages sector to reformulate and use less of our sugar in their products. This led to a decline in sugar sales and sugar revenue during the next two seasons that followed. This had a negative impact on the RV price. The final RV price for the 2018/19 season was R3 574,41. The 2019/20 improved to R4 220,58.

Other challenges include the underperforming, sugar imports into the country, especially sugar from Eswatini, rising input costs and the

low international sugar prices. These variables have coalesced to put our sector under pressure.

The sugar industry is a key player in the economy given its contribution to employment, livelihoods and its footprint in deep rural areas in KwaZulu-Natal and Mpumalanga provinces. The industry challenges caught the attention of government which reached out and got stakeholders around the table to talk about how the industry can be stabilised, supported and be put on a path to sustainability. A Sugar Master Plan was negotiated and drafted for adoption by all stakeholders. The Minister of the then Department of Trade and Industry appointed his Special Advisor, Harald Harvey to drive the Sugar Master Plan process that was a subject of discussion for the good part of 2019. On 8 April

2020 all value chain stakeholder adopted the Sugar Master Plan.

The Sugar Master Plan is in the process of being implemented. One of the areas that was dealt with in the Sugar Master Plan was commitment by value chain players to buy increased volumes of South African sugar in order to save the industry. Sales statistics for the current 2020/21 season show that sales performance is likely to restore sugar sales tonnage that was lost when the HPL was first introduced. The intervention by our government is beginning to bear desirable impact. Of more interest to SAFDA is the proposal in the Sugar Master Plan for a Small-Scale Farmers Master Plan which is likely to focus on a premium price payment for small-scale farmers based on the local market sale of sugar without the dilution effect of the export market. There will be a Task Team to deliberate on the Small-Scale Farmers Master Plan in which SAFDA will actively participate and make strong contributions. There are other Task Teams that will deal with some of the long-term interventions like the diversification of the industry. Some of the discussions cannot happen until the industry is designated and exempted in terms of the Competition Act. The Exemption application has already been submitted to the Competition; the outcome is awaited during the month of October.





## Sugar Regulations

On the 23rd of June 2020, government published a government gazette which contained the summary of the Sugar Master Plan, the designation of the industry in terms of the Competition Act, and the changes to Sugar Industry Regulations i.e. the constitution of the South African Sugar Association (SASA) and the Sugar Industry Agreement.

One of the notable changes in the Regulations is the PERMENT recognition of SAFDA as a member of the sugar industry, a victory that we need to celebrate as an organisation and black farmers within the sugar sector. The Regulations will expire in March 2024. It is hoped that in the intervening period the industry will engage in discussions that will produce a new framework for the future industry. The Sugar Master Plan discussions are likely going to result in proposals on how the

structure of the industry should look going forward, including how farmers should participate in diversification opportunities.

SAFDA started a series of local area workshops educating farmers about changes that were coming with the Regulations. Those workshops were halted by the National Lockdown. When the coast is clear, they will be resumed because there are changes that farmers need to understand and ensure they are implemented in local areas. Some of the provisions that can be highlighted in the fact that there will be a streamlined participation in industry structures at a central level, with small representation from Association. In this season the industry also appointed an Independent Chairperson which is one of the changes brought about by the Regulations. At a local level, voting in structures like

the Mill Group Board requires a united grower vote. Also at the beginning of each season, grower structures need to sign a Co-operation Agreement about how matters affected growers can be dealt with. These changes need to be well understood. The SAFDA Head Office is ready to support our local structures as they navigate these new changes.

SAFDA welcomes the Regulations and the Sugar Master Plan as they are meant to advance transformation that we have been fighting for since we were formed five years ago, and also to ensure that our industry stabilises and is set for growth into the future. As Dr Madlala always say, we do not want to be part of a dying industry. We want to see a sustainable and transformed sugar sector.

# Transforming the Sugar Industry with compensation to us

Sifiso Mnguni, Head: Grower Affairs



Since its formal recognition in the sugar industry in 2017, SAFDA has championed several initiatives in advancing the interest of black sugar cane farmers. One of the major achievements has been the R1 billion worth seven-point plan for Immediate Transformation Interventions over a period of five years. The interventions, which were meant to address the inequality gap between black small scale sugar cane farmers and their predominantly white large scale counterparts has since yielded in excess of R572 million.

SAFDA's fight for black grower benefit has always been premised on the argument that black growers have long been prejudiced in industry set standards of sharing of proceeds in several ways. Inequality is treating

that which is not equal equally. The recoverable value (RV) system applied by the industry to pay all growers for their produce means that despite all limitations in respect of field sizes, economies of scale and structurally designed proximity to the sugar milling factories, black small scale growers have to compete on an equal footing with historically resourced white large scale farmers. The weighted average price calculation formula applied by the industry is done such that black growers who are producing less than 15% of gross industry proceeds are equally subjected to the export market price when the volume of their produce is so small to contribute to the 'dump' export market. Most black small-scale farmers farm in small plots of communal land allocated to

them through permission or right to occupy (PTOs or RTOs). Despite land being traditionally small in size, land tenure systems limit black farmers' qualification to business finance in respect of bank loans.

The month of June 2020 saw qualifying black small scale and land reform farmers receiving yet another payment of R52 816 000 as 2019/20 season top up payment for transformation benefits in terms of Interventions 1 and 2. While these benefits continue to compensate and to provide the much needed cash relief to black growers by enhancing cash flow, they are still far from bridging the inequality discrepancy between black and white sugar cane farmers in South Africa. SAFDA continues to strive for more relief to inequality.



# Impact of Covid-19 on sugarcane farmers

By Nondumiso Mlondo: *Media and Communications Practitioner*

The President of South Africa His Excellency Cyril Ramaphosa announced that as from the 26th of March 2020 the country will be on lockdown. Under the lockdown all South Africans were required to stay at home. The agricultural sector was dissected as an essential service and was allowed to operate as food is a necessity, but this did hit hard on most sugarcane farmers as some could barely make ends meet due to these restrictions particularly the Small-Scale farmers. The National Lockdown came at a time when the 2020/2021 milling season was opening, and the growers were starting to harvest their cane.

Some of the effects Covid-19 has had on farming in the Sugar Industry includes slow cane delivery process which led to undesirable carry overs, this meant that the cane that was supposed to be delivered this season could not be finished and be delivered

next season. This will have negative effects on farmers' budgets and the crop. The pandemic has caused the cane cutting contractors to adopt harsher measures that have increased their operating costs. The cane cutting business contributes significantly to job creation during the cane harvesting season. The Covid-19 pandemic forced the contractors to cut down on the number of people employed due to the fact that transporting a substantial number to work was now challenge for them as the public transport was strictly monitored, and cane cutting was not considered as an essential service.

Foster Mhlongo from Nkomazi in Mpumalanga of who provides cane cutting contracting service to small-

scale farmers says that he was very saddened when he had to cut down on his cane cutting labourers because of this pandemic " There is nothing as tough and disturbing as having to retrench your staff and some you have been working with them for a long time but because of this pandemic I had to cut down some of my staff from 165 employees to only 70 labourers so that I can be able to pay wages at the end of the week, I am hoping that the country will be able to recover from this soon so that there won't be any more job losses" says Mhlongo

The Covid-19 pandemic has negatively affected all levels of sugarcane production in the industry. Small scale producers continue to be the most affected during this time given their generally weak financial position within the sugar sector. Their recovery may be long and uncertain post the Covid-19 pandemic.





As the whole world is faced with a painful reality of COVID-19 pandemic it has also been increasingly difficult for many families to make ends meet. The virus has left many families struggling due to job losses and business closures. Government has called on any stakeholders to lend a helping hand as this is the biggest pandemic to hit the global economy since World War II. The World Health Organization declared COVID-19 a pandemic because of the wide extent of the impact.

The corona virus pandemic has hit hard on the economy of the world thus government having to ask different stakeholders around the world to help assist those who are hard hit by the pandemic. As South African Farmers Development Association we heeded this call and donated over 600 food parcels to the needy people around the Mpumalanga province. This was done after a successful newly formed partnership that SAFDA established with the office of the MEC for Finance, Economic Development and Tourism department in the Mpumalanga Province, MEC Pat Ngomane.

As the SAFDA management, staff and a few growers were distributing these food parcels it became evidently clear that the country is in dire need for any type of assistance that may help the situation to become better. In most households that SAFDA was distributing food parcels in, you could see that SAFDA was a miracle that they had prayed for. "It was so sad and heart-breaking seeing and hearing different people and many of them saying they have not had something to eat for the past two days, they only had boiled water just so that their stomachs may be full, that really touched me and showed me that a lot still needs to be done, and government alone cannot really do that alone" says Dr Siyabonga Madlala SAFDA's Chief Executive Officer.

During the food parcel handover program Mam Senzeni Makhubela of Masibekela reserve area in Nkomazi district couldn't hold her tears when her food parcel was handed over to her. Speaking in her native language IsiSwati Mam'Makhubela says she was just about

# SAFDA responds to Covid-19 challenges

By Nondumiso Mlondo: Media and Communications Practitioner



to boil mushrooms that she picked up at the back of her house as it was the only thing eatable that was available before she got her parcel. "Today I was so sure that these mushrooms are the only thing that the family was going to have and after tonight I did not know what I was going to give my family. Things are bad in this household no one is working, and we all depend on the government's grant which is not enough to feed all six mouths" says Mam'Makhubela.

*The purpose of life is not to be happy. It is to be useful, to be honourable, to be compassionate, to have it make some difference that you have lived and lived well.*

- Ralph Waldo Emerson



# Dr Madlala visits the USA

By Dr Marilyn Govender and Nondumiso Mlondo

In October 2019 at the Global Ethanol Summit in Washington DC, USA, stakeholders around the globe gathered to discuss demand and supply, industrial, technology and policy issues pertaining to ethanol. The U.S. Grains Council (USGC) is working with partners around the globe, both producers and procurers, to develop and expand the worldwide ethanol market. The United States is the world's largest producer of ethanol, having produced nearly 15,8 billion gallons in 2019. Together, the U.S. and Brazil produce 85% of the world's ethanol, followed by European Union and China.

As Africa has been earmarked for global growth in the bioethanol market, a sizeable African delegation was invited to attend the Summit from Nigeria, Ghana, Israel, and South Africa. The South African delegation was led by Dr Siyabonga Madlala Executive Chairman of SAFDA, and attending by Dr Marilyn Govender (SAFDA), together with representatives from the Department of Energy, the Central Energy Fund, the SA Sugar Association and the South African Embassy in the United States, as invited guests of the United States Grains Council (USGC).

Through this platform SAFDA was able to engage with corn ethanol producers and understand the dynamics of their

production. Most interesting was the cost of production from corn-based ethanol being at least 30% lower than gasoline prices in the US. However, when compared to cane farmers in South Africa, it is an apple and orange comparison, as corn fields are massive and under mechanisation significantly reducing production costs.

SAFDA has continued to engage with the USGC assessing ways of reducing cost of production, ethanol efficiencies in the industrial plant, suppliers of cheap ethanol for trading or further beneficiation into ethanol high value-added derivatives. Contacts has been established with ethanol suppliers of various grades of ethanol that supply into the fuel ethanol, industrial, pharmaceutical, and potable markets.

SAFDA has also been investigating the diversification of the sugarcane sector in India, being more likened to small scale producers, varying scales of production and higher value added renewable chemical markets. Several Indian businesses and institutions attended the Summit, including Chief Executive Officer of India Glycols - leading manufacturer of bulk, specialty and performance chemicals and natural gums, spirits, industrial gases, sugar, and nutraceuticals in India. Opportunities for ethanol and ethanol

value added products are far reaching, including the application of ethanol as an octane replacement in fuel. In South Africa, an all-inclusive approach and decision needs to be taken by the South African government together with the fuel companies and producers for the usage of bioethanol as an octane enhancer. Higher-octane fuel directly improves engine efficiency and fuel economy, can enable higher compression ratio, engine downsizing, down-speeding, cylinder deactivation, hybridization, and advanced hardware.

SAFDA has built a network of stakeholders both nationally and internationally that have been successful in diversifying the value chain. Earlier this year, movements on the biofuel regulatory framework by the Department of Energy and Central Energy Fund, created some expectations around fuel ethanol. However, as 2020 hit and ethanol prices collapsed as fuel demand dropped significantly from COVID-19 shutdowns, many producers including those from US have re-engineered systems to make alternative ethanol products such as pharmaceutical grade hand sanitizer. Diversification opportunities from sugarcane are considerable including that of downstream beneficiation of sugarcane-based bioethanol, which SAFDA continues to pursue for its farmers.



# Agro-processing here we come!

By Nondumiso Mlondo: Media and Communications Practitioner

**S**outh African Farmers Development Association (SAFDA) and Maphophoma Milling from KwaNongoma signed an in-principle agreement. This agreement will see SAFDA assisting Maphophoma Maize Mill to resuscitate its operations which stopped in 2018 due to a lightning strike to the transformer. Maphophoma co-operative approached SAFDA for assistance in the operationalization of the Mill, and there was an in-principle agreement to provide support, following the signing of a Memorandum of Agreement. SAFDA Executive Chairperson, Dr Siyabonga Madlala, said he hopes that this Maize Mill will bring hope to the people of KwaNongoma as this will create job opportunities that will ensure a better life for the people of this area and its surroundings. "Rural areas are always left behind when it comes to community development initiatives. These areas are full of opportunities, but the problem is getting funding for such great projects which will have a good impact on many lives," says Dr Madlala.

SAFDA views this initiative to be of strategic importance as it is aligned to the multi season planting programme funded by the KZN Department of Agriculture and Rural Development (DARD). The initiative will provide market access for the maize crop that will be produced from the multi season planting programme. The maize meal that will be produced by the mill in the area will address the nutritional requirements as it will be fortified with vitamins and minerals. The Chairman of Maphophoma Milling, Sikhumbuzo



Ntombela, alluded to the fact that the reopening of this maize meal plant will help put food on the table for many families. "We have struggled to get this plant operational again after it was closed down in 2018, our only hope was shuttered when those doors were closed and as a chairman of this Mill I saw poverty in many of the people that used to work here when we told them that we are shutting down" says Ntombela.

SAFDA has several other MOU's with different communities, namely in Melmoth and in Mpumalanga province.

These agreements will support and assist farmers to be able to take care of their land and continue producing quality harvests. When SAFDA was formed its purpose was to assist the development of farmers in this country and close any gap in farming that might have been caused by the past neglect, which saw a decline in small-scale farmers. SAFDA formed an arm called Farm Management Services whose core business is to turn around farming operations for struggling farmers ensuring that they have good quality crops that will attract a good price and assist with the market access.

*"We have struggled to get this plant operational again after it was closed down in 2018, our only hope was shuttered when those doors were closed"*



# WOMEN: Special Feature

By Nondumiso Mlondo: Media and Communications Practitioner

## Florence Mavimbela Mpumalanga Provincial Operations Manager

**F**lorence Mavimbela (52) first Woman Boss in SAFDA in the Mpumalanga province. This ground-breaking appointment is a triumph for the organisation because it shows that the organization is keen on women emancipation and has faith in the leadership of Women. Mavimbela comes with her 30 years of experience in the Agricultural business which is highly beneficial for the organisation as well as for the advancement of SAFDA growers. SAFDA has not shied away from appointing women into leadership and executive roles. The Deputy Chairperson of the organisation is also a woman which is testament enough that the organisation takes pride in the role of women. The new boss holds a master's degree in Sustainable Agriculture that she obtained from the University of Free State and a Diploma in Agricultural Extension from Tompi Seleka College of Agriculture in Limpopo. Mavimbela

*"When I was growing up, I had a huge obsession with Agriculture, I told myself that when I finish High school, I wanted to study Agriculture and be a farmer and I did just that"*



is also planning to do her PHD with University of North West.

"When I was growing up, I had a huge obsession with Agriculture, I told myself that when I finish High school, I wanted to study Agriculture and be a farmer and I did just that" says Mavimbela. The Boss-Lady currently has 7 hectares of sugarcane land which she wishes to expand so that she can grow her operations. Her passion has led her to enjoy supporting farmers on their operations. Woman farmers have shown a significance excellence in farming, they take their farming businesses seriously, says Mavimbela.

Mavimbela joins the Mpumalanga team just in time as the organisation has just managed to rebuild the organisation's reputation following an unpleasant departure of senior leaders who resigned and led to many of our farmers feeling unsure about the stability of the organisation in the province. "My mandate is to make sure that SAFDA is stable and operational in the province,

the past occurrences were just part of growth for the organisation, I have to make sure that SAFDA remains relevant and active in the province and bring back trust from the growers of this province who were left confused because of what happened" says Mavimbela.

SAFDA was established to assist marginalised farmers and bring back hope to those who were at a verge of quitting farming because of the inequalities that were existing in the industry, says Mavimbela. The mission that SAFDA is operating with is in concurrence with Mavimbela's personal life missions which is to see each and every farmer successful in their business. "When I first heard about the organisation, I was very impressed with their mission, vision and values and I told myself that I want to be part of their team, and when I heard of the opportunity I didn't hesitate to apply for the position because it meant that my dreams will come true" says Mavimbela.



# Thoko Mavuso

## SAFDA Land Reform Farmer



**T**hoko Mavuso (48) is a SAFDA Land Reform farmer with more than 15 years of farming experience owns a 65 h\ a of land. She is one of the staunch members of SAFDA. She was part of the group that walked out of the South African Cane Growers' Association Congress of Growers meeting on 25 November 2020, to form SAFDA. She has been in the leadership structures of SAFDA ever since. She is the Chairperson of land reform farmers in her mill area. She is a member of the Central Executive Committee (CEC) and is part of the Disciplinary Committee that keeps and protect the integrity of the organization.

Mavuso hails from the now said to be "Right at the Heart of the Zulu Kingdom" in Pongola. Mavuso says farming has assisted her to be able to provide for her family and also her surrounding neighbours who are in need of employment. "Being a woman doesn't mean that you are only a provider in your family, but it means that you have a responsibility to look

*"I wish SAFDA was established way before I had received my farm, many people would have been landowners with big successful operations because of the kind of assistance that the organisation has come up with"*

after the whole village surrounding you" says Mavuso. The sugarcane industry has always been unfair to Black women, she says in her area you must be tough and be able to stand your ground because some male counterparts still look down on female entrepreneurs says Mavuso. The issue of water is what most farmers in the country are battling with, water has been scarce in the country, farmers remain the most affected whenever drought strikes.

Mavuso says that the journey of getting a farm for herself has been a tough and hard journey as she had to wait 5 years before she finally receives the farm that she had applied for. "I wish SAFDA was established way before than I had received my farm, many people would have been landowners with big successful operations because of the kind of assistance that the organisation has come up with" says Mavuso. The 48-year-old says that with the 5 years that SAFDA has she believes that they have achieved more than what 100 years old organisations have failed to do, she says other organizations have failed dismally to put the needs of farmers first, equally without looking at

the colour of one's skin, says Mavuso. "I feel like the industry has been unfair on a lot of black people, we have cried for help in our inputs such as assistance in Fertilizer, herbicides poison and all other input expenses, we've been drowning to debts trying to make sure that our operations are successful and running, until SAFDA came and did that in a matter of three years into it existence" says Mavuso.

Touching on the issues of women, she says that women now have the power to take up any position they want because organisations such as SAFDA has allowed many women to lead without being micromanaged, this shows the faith that the organisation have on them, says Mavuso. In the sugar Industry we have never seen black women in higher positions, this made us feel inferior and voiceless because this meant that no-one is fighting for our rights in that level, when Lee Hlubi was appointed as SASA's deputy Chair, this was then a victory to all Black women farmers because it meant we have someone who fully understand where we come from and will be able to represent us fittingly, concludes Mavuso.

# Maria Mazibuko

## MP SAFDA MAC Administrative Clerk

**M**aria Mazibuko (57) with 22 years of work experience with sugarcane growers as an administrative clerk. Mazibuko's journey started at Mfumfane sugarcane project 1998 where she gained vast experience in the sugarcane industry, this was the first time she worked for a sugarcane project in Komati, Mpumalanga which enabled her to learn about the Sugarcane industry. Her dedication led her to become a member of a Mill Cane Committee in the year 2000, as an assistant Administrative clerk. Mazibuko said her first learning experience at Mfumfane project was a learning curve in her career as it allowed her to explore the sugarcane industry which she did not have knowledge of. "It was great working in Mfumfane project, I experienced a lot of problems that compelled me to educate myself about the industry. I took every challenge that I came across with as a learning experience for myself" says Mazibuko.

Mazibuko served the Mill Cane Committee for 5 years as an assistant and got a promotion in 2006 as a Mill Cane Committee administrative clerk where she gained experience in computer skills which she fell

*"I call SAFDA  
a HOME where I have  
found warmth,  
comfort and growth"*



short of. Mazibuko holds certificates in Financial management (Basic Bookkeeping) certificate, Project administration certificate, certificate in communication, cane husbandry, entitlements (grants) and Economy certificate which she obtained along the journey of her career.

In 2018 Mazibuko started working for the South African Farmers Development Association as a MAC administration Clerk where she is servicing Komati and Malelane Small-scale farmers. When Mazibuko joined the SAFDA team she felt like she finally belongs and had found her eternal home "I call SAFDA a HOME where I have found warmth, comfort and growth" say Mazibuko. There are lot of challenges facing growers in Komati and Malelane but Mazibuko says that is what makes her job interesting because she can help growers become better than before.

"My wish for SAFDA is to see it growing and being expanded to all provinces and even be a global organization and see more women in leadership

positions within the organization" says Mazibuko. Most of the growers that Mazibuko deals with are older people who need attention and care, she added, without these proficiencies most people would not survive in this job. "I am touched and amazed by the degree of humility from our SAFDA management led by the CEO Dr Madlala, they have all shown that they have the best for growers at heart." says Mazibuko.

Mazibuko says that what pains her the most is seeing growers drowning in debt because they want to feed their families and provide employment to the people working in their fields. "I was very happy when SAFDA hosted a conference last year that dealt with all issues facing growers particularly the debt challenge that most of them are facing. The conference shed some light into most of the community projects, because now they know better" says Mazibuko referring to the Land Reform Conference that SAFDA held in September last year which dealt with issues facing farmers in Mpumalanga.



# Silondiwe Nxumalo

SAFDA  
Youth  
Farmer

**S**ilondiwe Nxumalo (29) is one of the youngest female farmers that SAFDA has. She was born and raised in a small village called KwaMaphumulo. She holds a BSc degree majoring in Environmental Science from the University of KwaZulu Natal and a SAMTRAC certificate from NOSA. She started working as a Health and Environmental Officer before pursuing her career in farming. Nxumalo owns a 40 hectares of sugarcane field in Macambini reserve. "There is nothing stopping the youth in the Agricultural business, even the sky is not a limit, being an owner of Land was a dream come true for me and a beginning of many great things, when I started with my sugarcane field, I knew this is what I wanted, I knew that I am not an office based person, as young as I am" says Nxumalo.

The 29-year-old says she is not only planting sugarcane as her dreams are beyond sugarcane. Nxumalo also has a 5 hectares of Chicory root which is used to make Nestle Ricoffee. "I have planted 5 hectares of Chicory root which is used to make Nestle Ricoffee. I'm currently in the process of branching out into garlic and

*"My Motivation in life is to do better than yesterday, I always want to do better and also help others"*



ginger production. I am passionate about youth development and entrepreneurship." says Nxumalo. Nxumalo hosted her first career Expo in 2019 in the community of KwaMaphumulo where she grew up. The Expo was meant to assist learners find their preferred careers.

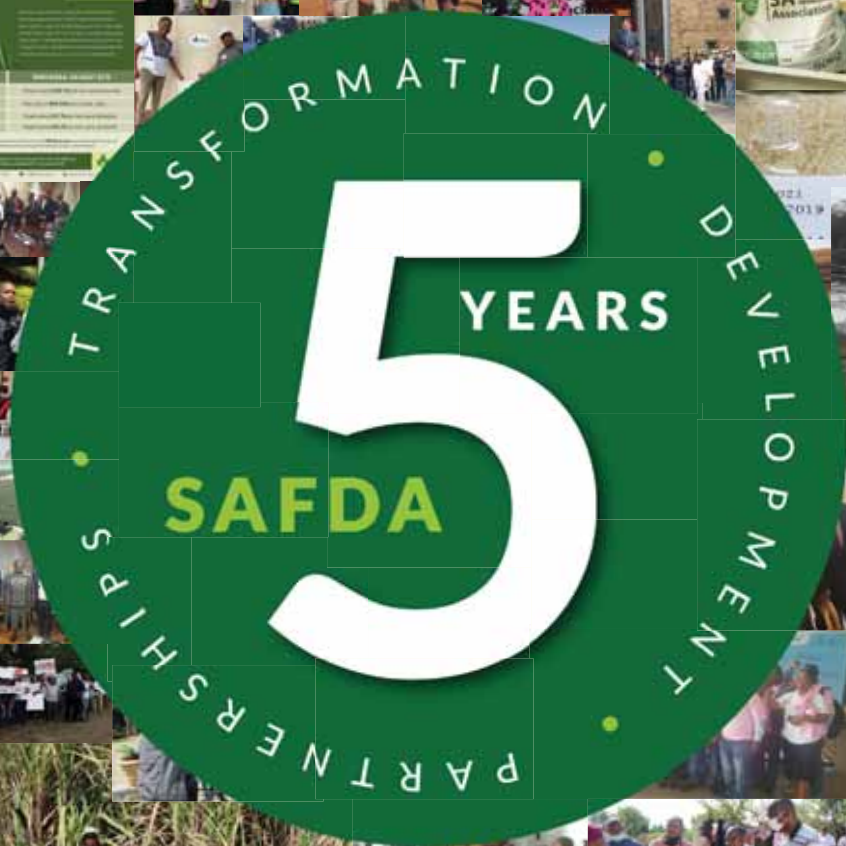
Nxumalo says SAFDA has played a huge role in her farming career. She alludes to the fertilizer assistance that she received from SAFDA. The recommendations and advice she get from the Farmer Development Advisors that are employed by SAFDA have been of great help to her. "Organizations such as SAFDA have come through for most of us who are new and want to pursue a career in farming, they have helped us develop ourselves and be better farmers" says Nxumalo. Nxumalo believes that there is nothing stopping SAFDA from taking up all the agricultural space and assist the deserving long relegated black farmers.

Nxumalo is part of an online magazine called iLembe Explore, which covers events, lifestyles and entrepreneurship

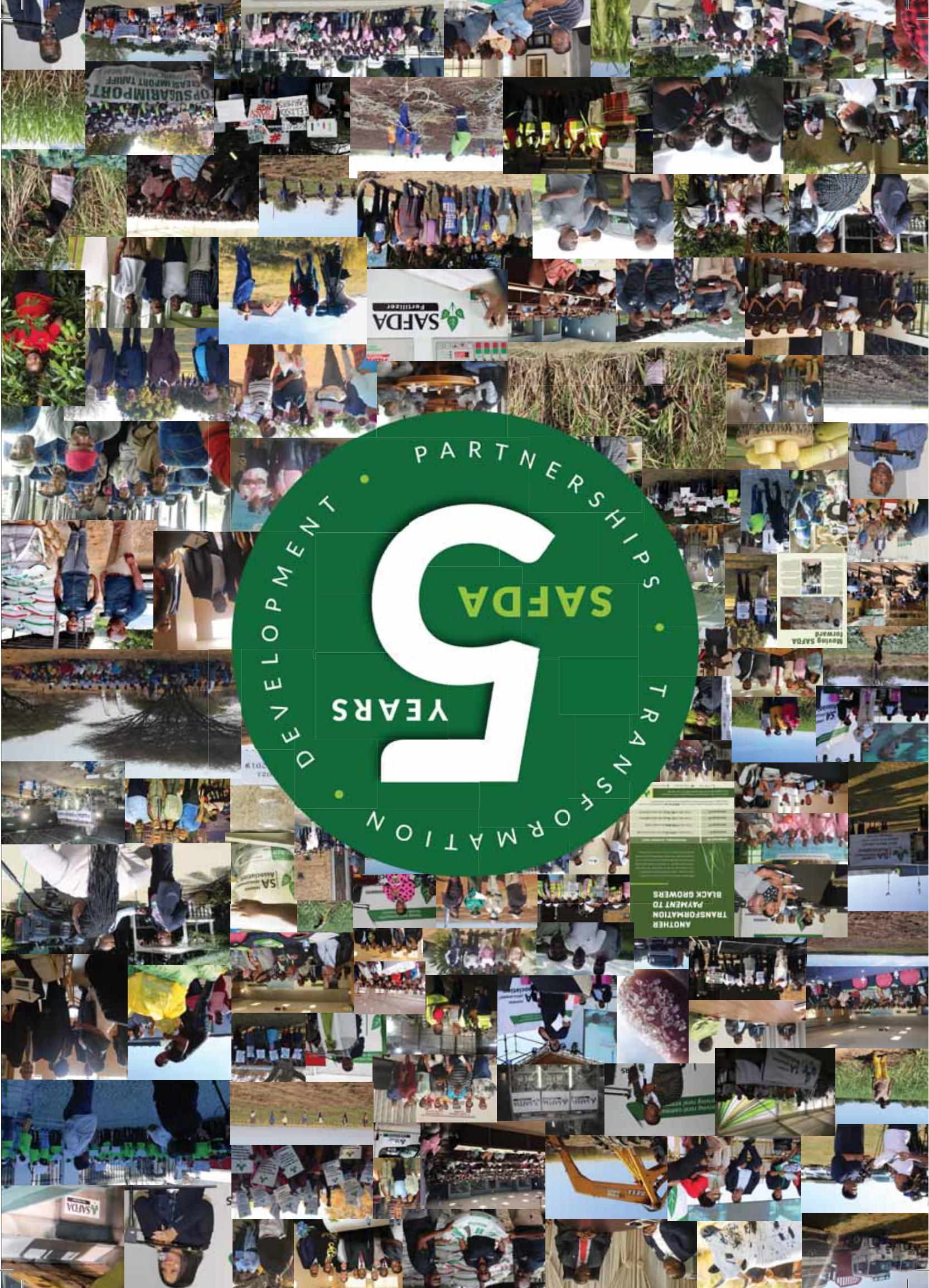
activities of iLembe district. "My Motivation in life is to do better than yesterday, I always want to do better and also help others" says the ambitious youngster. Nxumalo has more than 30 employees who works in her operations. The democracy that the country received in 1994 has opened up many of opportunities for the people like Nxumalo who believe that there is no stopping them from being who they want to be, she says SAFDA needs to invest more in Women upliftment programs, concludes Nxumalo.











OPUSARIMPORT  
GREAT IMPORT TARIFF

SAFDA  
PARTNERSHIP

Moving SAFDA  
forward

ANOTHER  
TRANSFORMATION  
PAYMENT TO  
BLACK GROWERS



# Silondive Nxumalo

## SAFDA Youth Farmer

**U**Silondive Nxumalo (29)

ungomunye wabalimi besifazane abancane abangaphansi kwe-SAFDA. Uzalilewe endaweni encane yakwaMaphumulo. Lentokazi ine-BSc degree lapho ibi-major khona ngezifundo ze-Environmental Science eNyuvesi YakwaZulu-Natali futhi inesitifiketi se-SAMTRAC sase-NOSA. Uqale wasebenza njeenge-Health and Environmental Officer ngaphambi kokuzama umkhakha wokutshala. UNxumalo unama-hectare angu-40 atshale umoba eMacambini Reserve. “Ayikho into evimbila intsha ukuthi ibe ngxenye yebhizinisi, ungafika noma ikhephi lapho ofisa khona, ukuba umninini womhlaba ngingasasho nje ukuthi kufezuke iphupho lami nokuqala kwezinto ezinhl. Ngesikhathi niquale insimi yami yomoba, bengazi ukuthi ilokhu engikufunayo, ngoba bengazi ukuthi angisiyena umuntu wasehhovisi ngisho ngisaseemncane,” kuchaza UNxumalo.

Lentokazi eneminyaka engu-29 ithi ayitshali kuphela umoba ngoba amaphupho akhe angaphezulu kwamoba. UNxumalo uphinde atshale ama-chicory root okwenziwa ngawo Nestle Ricoffee. “Sengitshale ama-

*“My Motivation in life is to do better than yesterday, I always want to do better and also help others”*

UNxumalo uthi iSAFDA idlale indima enkulu emsebenzini wakhe wezolimo. Uphinde abale usizo lwembewu yokutshala aluthole kwa-SAFDA. Ukutswa nezeluleko azithole kuma Farmer Development Advisors aqashwe ngu-SAFDA kumsiza kakhulu. “Izinhlangano ezifana ne-SAFDA sezisize kakhulu thina abasha futhi esifuna ukusebenza emkhakheni wezolimo, futhi sezenze sakwazi nokuzithuthukisa saba ngabalimi abangcono,” kusho UNxumalo. UNxumalo uyakholwa ukuthi akukho okungavimba iSAFDA ukuthi yenze umehluko kwezolimo futhi ikwazi ukusiza abalimi abamnyama abadanga usizo abebevaleleke ngaphandle. UNxumalo uyingxenye yephapha-bhuku eli-online, iLembe Explore,

hectare amahlanu eChicory root okwenziwa ngawo iNestle Ricoffee. Njengamanje ngisezinhlwini zokutshala ugiliga nge-ginger. Ngiyakuthanda ukuthuthukisa intsha nomkhakha wezambhizinisi,” kusho UNxumalo. UNxumalo usingathe u-Career expo yakhe yokuqala ngo 2019 empakathini wakwaMaphumulo lapho ekhulele khona. Le-Expo ibihlose ukusiza abafundi ukuba bathole futhi bazi kangcono ngemikhakha abayithandayo.

elibika ngemicimbi, ezokungebeleka kanye ngezambhizinisi ngaphansi koMkhandlu weLembe.



“Okungikuthuzayo empilweni ukwenza kangcono kunayizolo, ngihlale ngifuna ukwenza kangcono futhi ngisize abanye,” kubeka lentokazi esencane. UNxumalo unabasebenzi abadlule ku-30 abasebenza kumabhizinisi akhe. Inkululeko etholwe ilelizwe ngo 1994 ivule amathuba amaningi kubantu abafana noNxumalo, okholelwa ukuthi akukho okuzomvimba ekutheni abe ilokhu afisa ukuba ikhona. UNxumalo uphothule ngokuthi iSAFDA idinga ukuthi itshale imali ezinhlwini zokuthuthukiswa kwabesifazane.





# Maria Mazibuko MP SAFDA MAC Administrative Clerk

UMaria Mazibuko (57) unesipiliyoni seminyaka engu-

22 nabalimi bomoba esebenza njenge-administrative clerk.

Uhambo luka Mazibuko lugale ngo 1998, kwi-Mfumfune Sugar cane Project lapho ethole khona ulwazi ngemboni yomoba, njengoba ubeqala ukusebenza kwiphrojekthi yomoba eKomati, eMpumalanga; okwenze wafunda kabanzi ngemboni yomoba.

Ukuzinikelela kwakhe kuholele ekutheni abe ilunga le-Mill Cane Committee ngonyaka ka 2000, esikhundleni sokuba yi-administrative clerk. UMazibuko uthе ugale ukusebenza ze-cane husbandry, entitlements and Economy azithole ohambeni lwakhe lomsebenzi.

Ngo 2018, uMazibuko ugale ukusebenza ngaphansi kwenhlangano ye-South African Farmers Development Association njenge-MAC Administration Clerk, lapho ebesebenzisana nabalimi abasathuthuka base-Komati nase-Malelane. Ngesikhathi uMazibuko ubuhlungu kakhulu ukubona abalimi

UMazibuko usebenze ngaphansi kwe-Mill Cane Committee iminyaka emihlanu njenge-assistant wabe esekhushulelwa esikhundleni sokuba i-administrative clerk ngo 2006, lapho ethole khona isipiliyoni sokusebenza ngamakhompuytha abengakwazi ngaphambili.

UMazibuko

**“Ngibiza iSAFDA njengekhaya ngoba ngithole imfudumalo, ukunethezeka nokukhula kuyo,”**



unezitifiketi kwi-Financial Management (Basic Bookkeeping), isitifiketi se-Project Administration, isitifiketi se-Communication kanye nezitifiketi noMazibuko ngabantu abadala abadinga ukunakekelwa nosizo, enezezela uthе abantu abaninzi ngeke bahlele kulomsebenzi ngaphandle kobuchule. “Kuyangethinta futhi kuyamangalisa ukubona ukuzithoba kwabaphathi bethu eSAFDA, abaholwa uDkt Madala oyi CEO, bonke sebekhombisile ukuthi babeka izidingo zabalimi phambili,” kusho uMazibuko.

UMazibuko uthi okumzisa abasathuthuka base-Komati nase-Malelane. Ngesikhathi uMazibuko ubuhlungu kakhulu ukubona abalimi abasathuthuka base-Komati nase-Malelane kodwa izinkinga ezibhekene nabalimi, ikakhulu izikweletu abaninzi ababhekene nazo. UMazibuko uthi lokhu ikhona okwenza umsebenzi wakhe awuthande kakhulu ngoba uyakwazi ukusiza abalimi babengcono kunakugqala.

“Isifiso sami nge-SAFDA ukuyibona ikhula futhi isabalala nakwezinye izifundazwe futhi ibekhona nakwamanye amazwe, nokubona abantu besifazane abaninzi eMpumalanga.

# Thoko Mavuso weSAFDA ongaphansi kohlelo lokubuyiselwa komhlaba

**U**Thoko Mavuso (48) ungumlimi we-SAFDA ngaphansi kohlelo lokubuyiselwa komhlaba onesipiliyoni seminyaka engu-15 kwezolimo onomhlaba ongama-hectare angu-65. Ungelinye lamalungu eliqavile e-SAFDA. Wayeyingxenye yeqembu elishiya umhlango wososeshini wabalimi we-South African Can Growers ngo 25 November 2020, ukuze kusungulwe iSAFDA. Usebe sezinhakeni zobuholi be-SAFDA kusukela lapho. Ungusihalo wabalimi abangaphansi kohlelo lokubuyiselwa komhlaba endaweni aphuma kuyo. Uylungu le-Central Executive Committee (CEC), aphinde abe ekomidini lokugondiswa kwezigwegwe elivikela umthetho nobugotho benhlangano.

UMavuso uphuma endaweni yase Pongola, esiyaziwa njengesizinda sobukhosi baMazulu. UMavuso uthi ukulima kumnzile wakwazi ukondla umnden! wakhe kanye nomakhehlwane bakhe abadinga amathuba omsebenzi. “Ukuba ngowesifazane akusho ukuthi uzokondla umnden! wakho kuphela, kodwa kusho ukuthi nomphakathi

*“Ngifisa ngabe iSAFDA yayisungulwe ngaphambi kokuba ngithole ifamu lam, abantu abaningi ngabe banomhlaba namafamu aphumelayo ngenxa yosizo lenhlangano eza nalo,”*



osondelene nawe kufanele uMavuso. kubeka uMavuso. Imboni yomoba ayikaze ibe neqiniso senze umsebenzi njengosizo umanyolo, uphoyizeni wokubulala izilwanyana nezinye izinsiza-ku-sebenza, kade singena ezikweletini sizama ukwenza amabhizinisi abanye abalimi besilisa basababukela phansi osomabhizinisi besifazane. Inkinga ezweni, amanzi aloku eyinkinga futhi abalimi ibona abathinteka kakhulu uma kuvela isomiso.

UMavuso uthi uhambo lwakhe abazifunayo ngoba izinhlangano ezifana ne-SAFDA sezivumele abesifazane ukuthi bahole ngaphandle kokuphathwa ngesandla esiqinile, okutshengisa ukuthi inhlangano iyabuthemba, kusho uMavuso. Embonini kashukela asikaze sibone abesifazane abamnyama besezikhundleni eziphezulu, lokhu bekwenza sizwe sibancane futhi singenalo izwi ngoba akekho obelwela amalungelo ethu kulelizinga. Ngesikhathi uLee Hlubi ekhethwa njengo Sekela Sihalo we-SASA, lokhu kube ukunqoba kwabo bonke abalimi besifazane abamnyama ngoba besekukhona umuntu oqonda ngokuphelele lapho nokungabhekiki bala lesikhumba lomuntu, kusho uMavuso. “Ngibona sengathi



**By Nondumiso Mondo: Media and Communications Practitioner**

"Ngesikhathi ngikhula bengizifela ngezolimo, ngazitshelela ukuthi uma sengiphothule imfundo yamabanga aphezulu ngizifunda ezolimo enyusesi futhi ngibe umlimi, okuyinto engiyenzile," kubeka uMavimbela. Umphathi njengamanje useshale umoba olinganiselwa kuma-hectare ayisikhombisa afisa ukwandisa ukuze kukhule ibhizinisi lakhe. Uthando analo lalomkhakha selwenze wakuthokozele

ISAFDA yasungulwa ukuze isize abalimi abakhishwe inyumbazane nokunika ithemba labo abese befuna ukushiya phansi emkhakheni wezolimo ngexa

Ukwakha indawo eyumela umuntu akwazi ukusabela kahle, ikhona uMavimbela abheke ukukwenza njengoba esebekwe esikhundleni akusona. Izinhlangano ezakhelewe ngaphansi kwezimiso eziqotho zihale ziphumela futhi zikwazi ukugcina ubudlelwano obuhle nalabo okubanjiswene nabo. Sidinga ukusabela kanzima ukuze siqisekise ukuthi ukwenza umsebenzi akubadli kakhulu ephaketheni abalimi bethu, siye siqinisekisa ukuthi izinga lemiqibizo lilyathuthuka, esephetha uMavimbela.

**By Nondumiso Mlondo: Media and Communications Practitioner**

nhlangano ye-South African Farmers Development Association (SAFDA) ne Maphophoma Milling yakwaNongoma basiyine isivumelwano sezimiso. Kulesivumelwano i-SAFDA izosiza iMaphophoma Maize Mill ukuthi igale phansi yenze umsebenzi owamiswa ngo 2018 ngexaxa yombani wezuliz onamandla owalimazwa i-transformer. IMaphophoma co-operative ifake isicelo sosizo kwi-SAFDA lokwula le-Mill, kwabe sekuba khona isivumelwano sokunikezela ngosizo ngemva kokusayinwa kwe-Memorandum of Agreement phakathi kweleziNhangano. USihalo Omkhulu we-SAFDA, uDkt Siyabonga Madala, uthethe unethemba lokuthi le-Maize Mill izobuyisa ithemba kubantu bakwaNongoma njengoba kuzovuleka amathuba omsebenzi azoginisekisa ukuthi ziphilo zabantu bakulendawo nezisondelelene nayo ziyathuthuka. "Izindawo zasemakhaya zihale zisala ngaphandle uma kukhulinywa ngelizihlelo zokuthuthukisa komphakathi. Lezindawo zinamathuba amaningi, kodwa inkqubo ukuthola uxhaso wezimali oluzosiza amaphrojekthi aloluhlobo anomthelela omuhle ezimpilweni zabantu abaningi," kusho uDkt Madala.

ukuthi ukuvulwa kwe-plant yombila kuzosiza ekubhekeni ukudla ematafuleni eminden' eminye. "Sibe nezingqinamba zokuvula le-plant ukze isebenze futhi ngemva kokuvulwa kwayo ngo 2018, ithemba lashabalala ngesikhatshi iminyaka ivulwa, mina njengosihalo wale-mill ngibone indala ebibhekene nabantu ababesebenza lapha ngesikhatshi sibatshelela ukuthi izovalwa," kusho uNtombelela.

imihlabawo futhi baqhubeka nokuyana imikhizozo esezingeni eliphuzulu. NgesiKhathi! ISAFDA isungulwa inphoso bewukusiza ekuthuthukisweni kwabalimi balelizwe futhi ivale igcede elikhona kwezolimo elenziwe ukunganakwa kwaphambili, okwenza kwehla izingalelabali abasathuthuka. ISAFDA isungule igatha elibizwa nge-Farm Management Services elenziwe ukushintsha futhi lithuthukise amatamu abalimi ababhekene nobunzima ukze bakhiqiza izitshalo ezisezingeni ezizokwazi ukubheha amanani amahle futhi lisize abalimi bangene ezimakethe zohwebo.



**"Sibe nezinginamba zokuvula le-plant ukuzisebenze futhi ngemva kokuvulwa kwayo ngo 2018, ithemba lashaqalala ngesikhathi iminyango ivulwa"**







# UDkt Madlida nyakshale eMelika

By Dr Marilyn Goverder and Nondumiso Mondo

**N**genyanga ka Okthoba 2019 kwi-  
Washington DC, eMelika, kuhlalanyele  
khona abantu bemboni ngenhlalo  
yokudingida ukudayiswa nokuthengwa  
kwe-ethanol, nalapho kudingidwe  
khona nemboni, ezobuchwepheshe  
nezinkqina ezitshintsha imithetho olobene  
ne-ethanol. I-US Grains Council (USGC)  
isebenza nezinhlaka ezahlukeni  
emhlabeni jikelele, abadayisi nabathukeni  
ukuze kwakhiwe futhi kuthuthukiswe  
imakethe ye-ethanol emhlabeni.  
IMelika iyona ekhiqiza i-ethanol eningi  
emhlabeni, njengoba seyikhqiqize cishe  
ama-gallions angu-15,8 billion ngo 2019.  
Sekulunganiswe, IMelika ne-Brazil  
bakhqiza i-ethanol efinyelela ku 85%  
ekhona emhlabeni, kulandele amazwe  
angaphansi kwe-European Union ne-  
China.

ngezindlela zokuyikhizaza. Okuchaze kakhulu kube inani lokwenza umkhigizo okwehanele ukuthi lincaane ngo 30% uma ngombala eyenzwa ngomabala nabalimi bomoba baseNingizimu Afrika, kufana nokugqathanisisa ama-apula nama olintshi, njengoba amafamu ombila makhulu futhi uma esetshenzwa ngemishini, ziyancipha kakhulu zindleko zomkhigizo.

Amathuba akhona ngomkhqizo we-ethanol nemiye eyenziwa ngayo maningi kakhulu, okubalwa ukusetsenziswa kwayo njenge-octane esebenza esikhaleni sika-fuel. Enjizimu Afrika, isinqumo esizohlanganisa lokhu kudingeka sithathwe uhulumeni wezwe kanye nezinkampani ezidayisa ufuel kanye nabakhqizi be-bioethanol eyenziwa i-octane enhancer. Ufuel one-octane ephhezulu wenza injini isebenze kangconywana futhi wongeke, futhi kunemivuzo eminingi evikela injini nokusebenza kwemishini ehlukeneyo.

Njengoba izwekazi lase-Afrika selihlongozwe njengemakethe yokukhulisa umkhiziwo we-bioethanol, kumenywe ithimba eliyidlanzana ukuba lithamaye le-Summit elisuka eNigeria, Ghana, Israel nase-Ningizimu Afrika. Ithimba laseNingizimu Afrika belihlowa uDkt Siyabonga Madlala ongushialo Omkhulu we-SAFDA, ehambisana noDkt Marilyn Goverder (SAFDA), kanye nabebeume i-Department of Energy, i-Central Energy Fund, i-SA Sugar Association ne-South African Embassy eMelika, bonke ebebe izimenywa ze-United States Grains Council (USGC), kulomhlangothi i-SAFDA ikwazile ukuxhumana nabakhqiqizi be-corn ethanol ngenhloso yokwazi kangcono

kanye nezinye izimakethe.

noshukela eNdiya.

# I-SAFDA ilethe usizo ngemuva kwezinkinga ze- Covid-19

By Nondumiso Mlondo: Media and Communications Practitioner



**N**jengoba umhlaba wonke ubhekene nobubhane olubuhlungu lwe-COVID-19, sekuphinde kwabanzima kakhulu emindenini eminingi ukuthi ikwazi ukuziphilisa. Igciwane selishiye imindenini isokola ngenxa yokuphela kwemisibenzi nokuvalelwa kwamabhizinisi. Uhlumeni usefaka isicelo kunoma imaphi amabhizinisi nezinhlangano ukuba zizise ngoba lolu ububhane olukhulu kunalo lonke oluke lwashaya umnotho kusukela kwaphela impi Yomhlaba yesibili. Inhlango ye-World Health Organisation ibeke iCOVID-19 njengenhlekelele ngenze yomthelala ebe nawo emhlabeni.

Ububhane lwe-corona luthikameze kakhulu umnotho womhlaba wonke ingakho uhlumeni ecele izinhlangano emhlabeni jikelele ukuthi zizise labo abathintekile kakhulu kusukela kuqale lolubhubhane. Thina njenge-South African Farmers Development Association sifaka isandla ngokunikela ngamaphasela okudla angu-600 kubantu abaswele eMpumalanga. Lokhu kwenziwe ngemuva kokubambisana okugalewe phakathi kwe-SAFDA nehovisi lika MEC we-Finance, Economic Development and Tourism eMpumalanga, uNgongqoshe Pat Ngomane.

Ngesikhathi ithimba labaphathi be-SAFDA, abasebenzi kanye nabalimi abambalwa sihambisa lamaphasela okudla, kumane kwacaca ukuthi izwe liyaludinga usizo oluzokwenza isimo sibe ngcono. Emindenini eminingi iSAFDA enikele kuyo ngokudla, ububona ukuthi lemindenini ibiluthandazela lolusizo. “Bekudabukisa futhi kubuhlungu ukuzwa abantu abahlukene beveza ukuthi sebehlele izinsuku ezimbili bengadlile, baphuze amanzi abilisive kuphela ukuze bagcwalise izisu zabo, lokho kungithintile kakhulu futhi kwangikhombisa nokuthi kwenziwe kwenziwe okusafanele kwenziwe, uhlumeni eyedwa angeke akwenze konke,” kubeka uDkt Siyabonga Madlala oyi-Chief Executive Officer yeSAFDA.

Ngesikhathi kunikelewa ngamaphasela okudla, Umama Senzeni Makhubela waseMasibekela eNkomazi akakwazanga ukubamba izinyembezi zakhe ngesikhathi enikezwa iphasela lokudla. Sikhuluma naye ngolimi lwakhe lweSiswati, Umama

Makhubela uthethe ubeslungiselela ukuthosa amakhowe awakhe ngemuva kwendlu yakhe, ngoba iyona kuphela into edlekayo ebikhona ngaphambi kokuthola iphasela. “Namhlanje benginesiqiniseko sokuthi ukudla esinakho siwumndenini lamakhowe, angazi besizodlani ngemuva kwalokho siwumndenini. Izinto zimbi endlini njengoba engekho osebenzayo, sonke stihembele kwisibonelelo sikahulumeni naso esinganele ukondla izisu ezizisithupha,” kubeka uMama Makhubela.

**Inhlalo yempilo  
akukhona ukuthi ujabule.  
Ukuba wusizo,  
ubenobugqotho, ubenzowelo  
nokwenza umehluko  
ngesikhathi uphila futhi  
uphile kahle.**

- Ralph Waldo Emerson



# Umtshela weCovid-19 kubalimi bomoba

By Nondumiso Mlondo: Media and Communications Practitioner

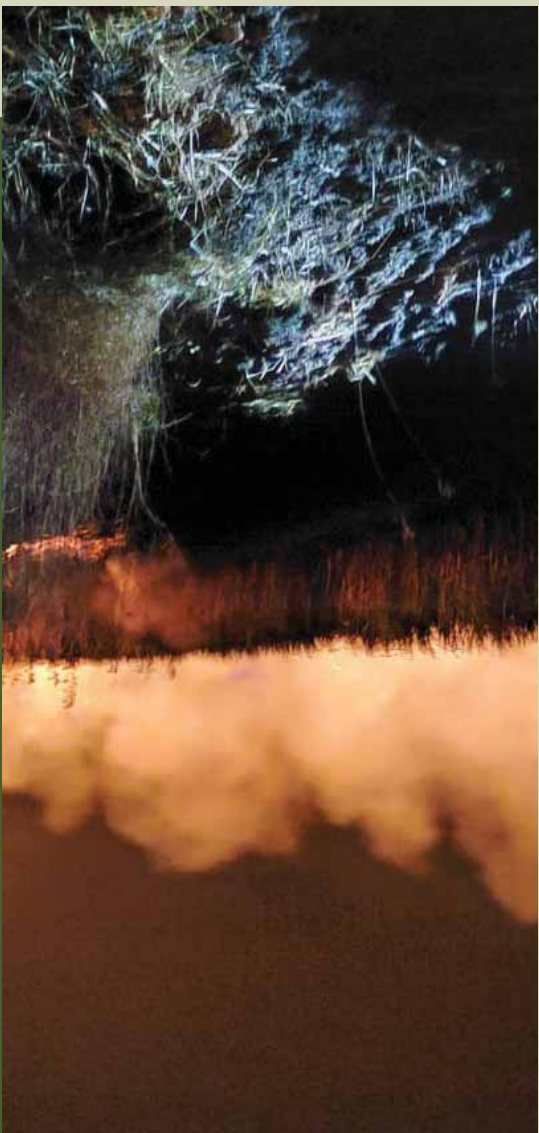
**U**Mongameli waseNingizimu Afrika, usuzothunyelwa nge-

Ucyril Ramaphosa wamemezela season elandelayo. Lokhu kuzothunaza isabelo-zimali sabalimi nezitshalo zabo. Lolubhubhane seludale ukuthi osonkontileka abanquma umoba ukuthi basebenzise ezinzima ezindleko zokwenza umoba lakha amathuba omsebenzi ngesikhathi sokuhlala umoba. Ubhubhane lwe-COVID-19 luphoke labo sonkontileka ukuthi banchiphise inani labantu abaqashwe njengoba ukuthutha uphathake kabi ngesikhathi sekumele anciphise inani labasebenzi bakhe ngenxa yobhubhane. "Ayikho into enzima njengokudliza abasebenzi bakho, abanye babo osusebenze nabo isikhathi eside kodwa ngenxa yalolu bhubhane ngiphokeleke ukuthi ngidlize abasebenzi abangu 165 ngasala nabangu 70, ukuze ngikwazi ukubakhokhela uma kuphela iviki. Ngiyathemba ukuthi izwe lizobuyela esimweni esiyayelekile ngokushesha ukuze kungabe kusalahleka eminye imisebenzi," kubeka uMhlongo.

Eminye yemithela ye-COVID-19 ebekhona ekulimeni embonini yomoba kubekuhamba kancane kokuthunyelwa komoba emishinini, okwenze wasala, okusho ukuthi umoba obekumele uhanjise kule-season awuqedwanga

Ufoster Mhlongo waseNkomazi njengomsebenzi obalulekile.

Ubhubhane lwe-COVID-19 luthikameze wonke amazinga omkhqizo womoba kulemboni. Abalimi abasathuthuka ibona abathintekakakhulu ngalesikhathi njengoba bengananawo amandla ngokwezimali emkhakheni kashukela. Ukubuyela esimweni kungathatha isikhathi eside futhi akucacile ukuthi kuzokwenzakalani ngemuva kwe-



# !math s'izuzis



ngendlela engalingana futhi engafani. Uhlelo olwaziwa nge recoverable value (RV) olusetshenziswa kwemboni ukuze kukhokhelwe bonke abalimi ngemikhqizo yabo luchaza ukuthi noma kubhekwa inselelo okubalwa kuzobukhulu bamafamu, ezomnotho nokwakheka kwamabhizinisi nebanga lokusondela ezimbonini ezikhqiza ushukela, abalimi abamnyama kufanele baqhudelane ezingeni elifanayo nabalimi abamhlophe abanamabhizinisi amakhulu. Indlela okubalwa ngayo inani lomkhqizo embonini lenziwa ngendlela eyenza ukuthi abalimi abamnyama abakhqiza ngaphansi kuka 15% wemali engenayo embonini kufanele balandele inani lokuthumela umkhqizo emazweni angaphandle, kodwa bebekhqiza okuncane kunezifundo zemakethe yokudayiselela amazwaphesheya. Iningi labalimi abamnyama abasathuthuka batshala kumhlaba omanane lapho kuhlala khona imiphakathi abasuke

benikezwe wona ngemvume, phecelezi ama-PTO okanye ama-RTO. Ngaphandle kokuthi umhlaba usuke umncane uma kubhekwa ubukhulu, ububanzi kuni-keza abalimi abanyama izinkinga uma sekufanele baxhaswe ngokwezimali amabhangwe kumabhizinisi! abo.



## Inqubo-mgomo kashukela

Ngomhla 23 Juni 2020, uhulumeni sikhophe indlela entsha okuzomiswa ngayo izinhlaka kulemboni esikhathini kwale-season, izinhlaka zabalimi kufanele zisayine isivumelwano esaziwa nge-Co-operation Agreement esithinta izindaba zamasu angasetshenziswa ukuze kuxazululwe izinkinga ezibhekene nabalimi. Lonke lolushintsho kufanele lugondiswe kahle. Ibhovisi elikhulu le-SAFDA selikulungele ukusiza izinhlaka ziyayele lezinguquko ezintsha.

Olunye ushintsho olugqamile kulemithetho kube ukugqamisa kwe-SAFDA njengela lemboni kashukela, okuyimpumelelo okudingeka siyibungaze njengenhlangano futhi njengabalimi abanyama abasembonini kashukela. Lemithetho izosabela kude uMashi 2024. Kuyathembakala ukuthi ngalesikhathi imboni izoba nezingxoxo ezizokhipha umhlahladlela omusha okuzosetshenzelwa phezu kwawo embonini eminyakeni ezayo. Izingxoxo ezingaphansi kwe-Sugar

Master Plan maningi amathuba okuthi sikhophe indlela entsha okuzomiswa ngayo izinhlaka kulemboni esikhathini kwale-season, izinhlaka zabalimi kufanele zisayine isivumelwano esaziwa nge-Co-operation Agreement esithinta izindaba zamasu angasetshenziswa ukuze kuxazululwe izinkinga ezibhekene nabalimi. Lonke lolushintsho kufanele lugondiswe kahle. Ibhovisi elikhulu le-SAFDA selikulungele ukusiza izinhlaka ziyayele lezinguquko ezintsha.

Ezindaweni ezahlukene, izinhlaka ushintsho olufike nomthetho omusha. Yaqasha uSihalo Ozimele okungolunye kuSoseshini. Kulokhu imboni iphinde yezinhlaka zemboni, baphinde bamelwe oluzokwenza abalimi babe ingxenye ukuthi kufanele kube nohlelo olugondile ezindaweni. Okunye okungabakwa kuqinisekiswa ukuthi zenziwa ngendlela okufanele zazive abalimi futhi ngoba kunezinguquko ezikhona sezidala ukuba ngcono, azoqhubeke i-Lockdown kazwelonke. Uma izinto omusha. Lama-workshop amiswe ngezinguquko ezizoz nomthetho workshop ahlose ukufundisa abalimi





## Ukubekwa kwemigomo ezokwenzwa kusimame imboni kashukela

By Thandokwakhe Sibiya- Strategic Support Executive

### I-Sugar Master Plan

Imboni ilokhu ibhekene nezinkinga eziningi kanye nezinsalelo ezibeka engcupheni ikusasa lalemboni kashukela. Phakathi kwalezinsalelo sibala i-Health Promotion Levy (HPL), okuyimali okumele ikhokhwe abakhigizi beziphuzo ezinoshukela, egale ngomhlaka 1 Ephreli 2018. Ngesikhathi kwethulwa le-levy kuphokeleke ukuthi amakhasimende asembonini yokwenzwa iziphuzo ashintshe indlela enza ngayo imikhigizozo futhi asebenzise ushukela omncane kunakugqala. Lokhu kuholele ekutheni kwehle ukudayiswa koshukela nenzenzo engenjiswe ushukela yehla eminyakeni emibili elandele ngemuva kokwethulwa kwale-levy. Lokhu kube nomthelela kwinani le-RV, Inani lokugcina le-RV ngo 2018/19 belimi ku R3 574,41. Izinto zibengcono ngo 2019/20 ngoba lifike ku R4 220,58. Ezinye izinsalelo ezibhekene nemboni ukungenzi kahle ezimakethe zokungenisa ushukela kulelizwe, ikakhulukazi ushukela ovela Eswatini, ukukhuphuka kwezindleko zokwenzwa umkhigizozo kanye namanani aphantsi

oshukela wasemazweni aphesheya. Zonke lezinsalelo ngokuhlanganyela zibeke lomkhakha ngaphansi kwengcindezi.

Imboni kashukela idlala indima enkulu emnothweni njengoba iletha amathuba omsebenzi, iphilisa abantu futhi iyathandwa emiphakathini yaseMakhaya Kwazulu-Natali naseMpumalanga. Izinsalelo ezibhekene nemboni zidonse amehlo kaHulumeni okwazile ukwelula isandla, wahlala phansi nezinhla ka ezikulemboni ukuze kuxoxwe ngokuthi ingasizwa kanjani lemboni ukuze isimame esikhathini esizayo. Kukhulunywe ngohlelo olwaziwa phecelezi nge-Sugar Master Plan, lwashicilelwa ukuze lulanделwe ibona bonke abadlala indima kulemboni. Umphathiswa womnyango kaHulumeni obuwa zi nge Department of Trade and Industry ugashé uMeli, uHarald Harvey ukuze ahole i-Sugar Master Plan edingidwe kakhulu ngo 2019. Ngomhlaka 8 Ephreli 2020, bonke abangaphansi kwalemboni bagalile

ukulandela i-Sugar Master Plan.

I-Sugar Master Plan isezinhlelweni yokwethulwa ngokuphelele. Enye yezinto okubhekwane nayo kakhulu ku Sugar Master Plan bekuwuzinikela kwalabo abadlala indima embonini ekutheni bathenge ushukela okhigizwa eNingizimu Afrika ukuze kutakulwe imboni. Izibalo zokuthengwa koshukela ngo 2020/21 ezikhona manje zitshe ngisa ukuthi ukuthengwa koshukela kuzoba ngcono kuvale nesikhala samathani alahleke ngesikhathi kugala ukwethulwa kwe-HPL. Ukungenela kukahulumeni sekwenze umehluko obonakalayo. Okuthinta iSAFDA kakhulu ukuthi ukubekwa kwe-Master Plan yabalimi abasathuthuka ngaphansi kwe-Sugar Master Plan, okuzogxila kuyo ekutheni abalimi abasathuthuka bakhokhelwe ngenani elihle ezimakethe zoshukela zakuleli ngaphandle kokuthintwa okwenzeka ezimakethe zangaphandle. Kuzoba khona ithimba elizonikezwa umsebenzi wokubhekisa i-Master Plan yabalimi abasathuthuka, lapho iSAFDA izodlala khona indima enkulu. Akhona amanye amathimba azobhekana nokukhuliswa kwemboni ukuze isimame eminyakeni ezayo, okubalwa kukho ukubheka amanye amathuba akhona kulemboni. Ezinye zezingxoxo ngeke zenzeke ngaphambi kokuthi imboni ibekwe endaweni efanele futhi ikhishwe ngokwe-Competition Act. Isicelo se-Exemption sezifakiwe ngaphansi kwe-Competition Act; isinqumo sizokhishwa ngenyanga ka Oktobher.





Luhlulwemiphakatsi

Luhlulwemiphakatsi		
NAME OF THE PROJECT	HECTARES RESTORED	NO. OF HOUSEHOLDS
• eNtembeni Community • eMakhasaneni Community • eNtembeni Royal House • Isizwe Sakwa-Dludla	• 1 801 hectares • 1 250 hectares • 1 433 hectares • 1 122 hectares	• 350 households • 99 households • 150 households • 66 households

Ehlangotsini lwemphakatsi

COMMODITIES	EMAKHASANENI	ENTEMBENI	ENTEMBENI ROYALE HOUSE	ISIZWE SAKWADLUDLA
SUGAR CANE (HA) AVOCADO (HA) TIMBER (HA)	613 68 96	777 121 513	594 80 306	793 54 62

Ushialo Dlakude: usheshe wadlula emhlabeni nobuholi obuqotho

Sifiso Mnguni- Grower Affairs Head



Chairman Vusi Dlakude

A balimi bomoba bakwaZulu Natali eside ukujwayela ukuthi ubuholi obuqotho buka Sihlalo uVusi Dlakude abusekho ngemuva kokuthi adlule emhlabeni. Inhlangothi ye-South African Farmers Development Association (SAFDA) ivalelise enye yezinselele eziziqotho futhi ezethembekile, uMnuMzane Vusi Peter Dlakude. UDlakude wazalelwa eMdudaba (Kahoyi) ngo 1968, lapho ezalwa khona ngu Ester Nkosi no-Mcoshwa Phineas Dlakude. Uqale imfundo yamabanga aphantsi ngo 1974 Kahoyi Primary School wabe esephothula amabanga aphezulu eManzolvandle Secondary School eMgobodzi. Ngo 1989 uqashwe ngaphansi kwe-Department of Home Affairs wabe eseqala ukusebenza eLebombo Border Post njenge Immigration Officer.

Ngo 1998 uthathe umhlaphansi ngaphambi kwesikhathi ukuze aqale ibhizinisi lamakhaza nebizinisi lokutshala umoba. Ngawo unyaka ka 1998 ujoyine iqembu le-ANC, lapho okubikwa khona ukuthi usebenze ngobuqotho nokuthembeka, futhi usebenze ngokuzikhandla kulenhlangano ngaphandle kokulangazela izikhundla zobuholi ezikhokhelwayo, noma ekwazile ukusiza ozakwabo abaningi ukuba akhule enhlanganweni afinyelele ezikhundleni Dlakude. Ngo 2017, uDlakude ujoyine i-SAFDA nalapho egcine esesebenza njengeIlinye ilunga le-Komati Mill Area (MAC). Uphakame njengeqhawe ngasekudaleni kuka 2020 ngesikhathi iSAFDA ibhekene nezinkinga zobuholi eMpumalanga



# ISAFDA isungula izindlela zokusebenza ezinobuchule eMelmoth

By Nondumiso Mlondo: Media and Communications Practitioner



—South African Farmers Development Association (SAFDA) ingene izindawo kusukela ngo Mashi 2020. Trust engena esivumelwaneni Uma imiphakathi noma ama-sokusebenzisana, bathenjiswa ukuthi kuzoba khona ukudluliselwa kwamakho no msebenzi ukuze mese kufika isikhathi sokuphela kwenkontleka nabantu okusebenziswana nabo sebehamba, imiphakathi izokwazi ukuzitshalela ngokwayo. ISAFDA iyakwazi ukuzigcina lezithembiso ezenziwa emiphakathini ngoba inohlelo lweminyaka emibili lokuthuthukisa abafundi abaneziqu, ngokubangenisa ezinhleweni zokuthuthukiswa kwamakho no ngokubaqeqesha kumphakathi ngamunye. ISAFDA iphinde isize imiphakathi eminingi ngamaphrojekthi okuthuthukiswa nokusebenza futhi ikhigize” kusho u Dkt. Madala. Kuzosungulwa nenkampani ezongamela umsebenzi wamasimu ezoba ingxenye yenhlangano ezokwazi ukugqula umsebenzi wasemasimini angenzi kahle ukuze kuqinisekise ukuthi akhipha umkhigizo osezingeni lezindawo zivele ngemuva kwesinqumo emihlanu endaweni yase Melmoth, ibuyisele umhlaba emiphakathini okubuyiselwa kubantu oKubuyiselwa engamela amalungelo

aphesheya ahlukenene.

nokotapheya othengiselwa amazwe okutshalwe kuwo umoba, izilahla inama-hectare alliganiselwa ku 6800 wonke lamaphrojekthi amane. IMelmoth izibophezele ukusiza ekuphatheni ISAFDA izokongamela amasimu futhi Melmoth. Ngaphansi kwesivumelwano, Agreement nemiphakathi emine yase- i-Co-Management ngokubambisana sokuphatha esivumelwaneni komhlaba. I-SAFDA iphinde yangenela hectare angu 1 801, Emakhasaneni sokuphatha enama-hectare angu- 1 250, Entembeni Royal House yona enama-hectare angu- 1 433 ne-community trust yesizwe Sakwa-Dludla enama-hectare angu-1 122. “Ngaphhezulu kwesivumelwano sokuphatha ngokubambisana ISAFDA

ezingamela umsebenzi wamasimu nokusebenza futhi ikhigize” kusho u Dkt. Madala. Kuzosungulwa nenkampani ezongamela umsebenzi wamasimu ezoba ingxenye yenhlangano ezokwazi ukugqula umsebenzi wasemasimini angenzi kahle ukuze kuqinisekise ukuthi akhipha umkhigizo osezingeni lezindawo zivele ngemuva kwesinqumo emihlanu endaweni yase Melmoth, ibuyisele umhlaba emiphakathini okubuyiselwa kubantu oKubuyiselwa engamela amalungelo

“Kuyintokozo enkulu ukujoyinwa uMama Fubbs kulemboni ematasa ngemizamamo yokuletha ushintsho nokuyenza ibe nekusasa eliqhakazile, lapho kumele kuqinisekise khona ukuthi abalimi abasathuthuka nalabo abangaphansi kohlelo lokubuyiselwa komhlaba bathola usizo khona. Umama Fubbs usekhombisile ukuzinikela kwakhe ekuletheni ushintsho embonini,” kusho uDkt Siyabonga Madala, oyi-Executive Chairperson we-SAFDA.

ngazwi linye kulesikhundla. e-SASA, wonke amalunga amvotele emhlanganweni wekhethelelo wamanxusa Umama Fubbs ukhethelele kulesikhundla Association (SASA) noko kwe i-SAFDA. Sekela Sihlalo we-South African Sugar ngoba kugqibekela nezinhlalo ze-Mama Fubbs kuyinto enhle embonini ISAFDA ikhola ukuthi ukugqibekela kuka

Lindiwe Hlubu, oyi Sekela likasihlalo we-SAFDA, esikhundleni sokuba iSekela Sihlalo we-SASA. Manje sekujwayelekile embonini ukuthi abesifazane babe ezikhundleni eziphezulu, ikakhulu uNksz Sindi Mabaso-Koyana oqashelwe esikhundleni sokuba usihlalo ozimele kasaSA kulonyaka.

UDkt Madala ubonge uNksz Hlubu kulemboni njengoba ubehola ikomidi lasephalamende elibhekela imithetho neMigomo embonini kashukela. Siyathemba ukuthi ukugqibekela kwaletha izingqungu ezidingekayo embonini.

Umama Fubbs ujoyina abanye besifazane abasezikhundleni zobuholi kusoseshini walemboni. ISAFDA seyethule abantu besifazane abaningi ezikhundleni zobuholi kulemboni. Ngesikhathi sifika embonini ngo 2018, siqashe uNksz



By Thandokwakhwe Sibya- Strategic Support Executive

# I-SAFDA ikhethe uMama Fubbs njengosekela sihlalo omusha wakwa-SASA

RV PRICE NOV. 2020:

R4 4 912,55 (R115,09 Increase vs September 2020 Price). D Factor 0.430984

The official NEWSLETTER of SAFDA

ZABALIMI

# Izi!gi

Nov. 2020 - Feb. 2021

