

Izigi ZABALIMI

Issue 1, May 2018



IPHEPHABHUKU le SAFDA

RV PRICE MAY 2018: R3 783,26 (R40.85 Down vs April 2018 Price). D Factor 0.364562

Akuvinjwe ushukela ovela wakwamanye amazwe! Kodwa nemboni ayemukele ushintsho

Sfiso Mnguni, *Grower Support Services Manager*



USekela Sihlalo weSAFDA, uLindiwe Hlubi ekhuluma neziminyama emcimbini wokwethulwa ngokusemthethweni kukaSAFDA eLangeni Hotel eThekwini. (Isithombe: Nolwazi Maphosa)

Imboni ka Shukela eNingizimu Afrika elengela engcupheni yokuwa ngenxa kashukela oshibhile ovela emazweni angaphandle kwaleli, ngaphandle uma inhlangotho yamazwe ebhekele ukulawulwa kwezohwebo eNingizimu Afrika i-International Trade Administration Commission of South Africa (ITAC) ingenza ngokushesha izinhlelo ezinqala yenyuse intela ekhokhwa abahwebi ngokuletha ushukela kuleli uvela kwamanye amazwe.

Ekuqaleni kwalonyaka, imboni kashukela yafaka isicelo kwi-ITAC, icela kukhushulwa inani lentela yokungeniswa kukashukela, loko obekuzosiza ukuvikela imboni yakuleli. Okwamanje lentela imi ku \$566 nosekubekela lemboni engcupheni yokuwa. Ukuze iphume kulesimo imboni iye yafaka

isicelo sokuthi lentela yenyuswe ngo \$290, okuzoyibeka ku-\$856 ngethani lashukela olethwa kuleli. Kamuva nje, ITAC iye yanika izinkomba zokuthi izosicubungula isicelo salemboni. Impendulo ingabhekwa ekupheleni kuka July 2018. Ngesikhathi kusalindiwe abalimu bomoba basathwele kanzima njengoba sekuqaliwe kwabikwa ukuthi asebegayile ngokuvulwa kwemishini abayitholanga inzuzo, kunalokho kugcine kuyibo abakweleta imishini. Loku kuchaza ukuthi emva konyaka omude abalimu besebenza kanzima bezikhandla ngokutshala nokunakekela umoba, bagcina sebezithola bekwelwa izimboni ezibagayela umoba wabo. Uma kungekho okwenzakalayo ngokukhulu ukushesha ukuze kunyuswe intengiso yashukela

ongeniswa kuleli, umoba uzohlala uyisitshalo esingenanzuzo. Lesisimo sikhinyabeza abalimu abancane nabakhulu kanye nabagayi ngokufanayo njengoba inani liye lehla ngo 13,5 %.

Yize I-ITAC kuyiyo edlala indawo enkulu ekushintshweni kwe ntengo yokungenisa ushukela kuleli ibe ileyo ezovikela imboni, nayo imboni inendima enkulu ekumele iyidlale yokuphumela obala ngokusekela izinhlelo zenguquko zalelizwe. I-SAFDA iye yafaka isiphakamiso iphonsela imboni inselelo ngezinto okumele lemboni izenze njengendlela yokhombisa ukwamukela ushintsho ezweni, okubalwa kuzo:

- Ukusungula isikhwama senguquko esizoxhasa izinhlelo zokuletha ushintsho kulemboni kuthuthukiswe abantu abamnyama
- Ukusungulwa kohlelo lokukhokhela bonke abalimu abamnyama ngentengo engcono yemakethe yasekhaya.
- Ukukhipha bonke abalimi abamnyama ezindlekweni zokuthuthwa kukamoba bakhokhelwe ngentengo yasepulazini.
- Ukuxazululwa kwezinkinga zokulibaziseka komoba osushisiwe ngaphambi kokugaywa, ngokuthi kushintshwe uhlelo lokungena komoba emshinini, ukuze umoba wabantu abamnyama ungalindi kodwa ungene ugaywe kuqala.
- Ukuxhaswa kweSAFDA ngemali yokusebenza njengoba kuyiyo inhlangotho elekelela ngokuzikhandla ukuletha inguquko kulemboni.

Yize lamaphuzu angenhla ezosiza abalimu abamnyama ukuthuthukisa inzuzo, kanye nokuthuthukisa imboni ekubeni nedumela ekwenzeni izingugquko, ISAFDA ikholelwa ukuthi kusekhulu okungenziwa yilemboni ukuthuthukisa abantu abamnyama, uma kubhekwa ukuthi inani lenzuzo etholakala ngokuvikelwa uHulumeni lilinganiselwa phakathi kwezigidigidi ezingu R2 billion no R4 billion ngonyaka.

CONTENTS

PAGE 2:
R172 Million u-SAFDA
elwela uguquko

PAGE 5:
Izinsika zamasu namaqhinga kaSAFDA

PAGE 3:
Abalimi beSAFDA
eMpumalanga

PAGE 6:
Uxhaso luka R2.6m kubalimi

PAGE 4:
Ukwamukeleka
SAFDA embonini
kashukela



SA FARMERS
DEVELOPMENT
Association

Abalimi abamnyama bahlomule ngo-R172m embonini kashukela USAFDA elwelwa uguquko

Sfiso Mnguni, Grower Support Services Manager

Ngesikhathi u-SAFDA uthola ukwamukeleka nokuthathwa njengenhlangano emqoka embonini kaShukela yazinikezela ekuletheni izinguquko ezidingeka ngokushesha ukuze kuzuze bonke abalimi. Lokhu kubala kuko, ukumiswa kokungeniswa kwashukela oshibhile kuleli uvela kwamanye amazwe, ukusungulwa kohlelo lokukhokhela bonke abalimi abamnyama ngentengo engcono yemakethe yasekhaya, ukukhipha bonke abalimi abamnyama ezindlekweni zokuthuthwa kukamoba bakhokhelwe ngentengo yasepulazini, ukuxazululwa kwezinkinga zokulibaziseka komoba osushisiwe ngaphambi kokugaywa, ngokuthi kushintshwe uhlelo lokungena komoba emshinini, ukuze umoba wabantu abamnyama ungalindi kodwa ungene ugaywe kuqala.

Kamuya nje ukuphikelela kuka SAFDA nokufuna izinguquko embonini, kuye kwakhombisa imiphumela ebonakalayo, njengoba imboni yamukele uhlelo olunamasu angu-8 oluzoletha lezinguquko ngokushesha. Loku kuza njengempendulo emva kokuthola umyalo onqala uvela ekomidini lasePhalamende (Parliamentary Portfolio Committee on Trade and Industry), wokuthi kungakapheli amasonto amabili, lemboni ibe isiqhamuke nesu lokuletha izinguquko ezibonakalayo ngokukhulu ukushesha, kanti futhi singakapheli isikhathi esingange zinyanga ezinthathu ibe isinesu lokuletha izinguquko ezizokwenzeka esikhathini esimaphakathi kuya kweside. Inani lesabelo zimali esibekelwe lezinguquko eziphuthumayo singu R172 million, kanti ukusebenza

kwaloluhlelo kuzohlela kuyoqala kusukela ngomhlaka-1 April 2018. Lomboniso ongenzansi ukhombisa indlela lemali ehlukaniwe ngayo ngokwalamasu angu-8.



U-Walter Mandlazi ensimini yakhe ese-Figtree D eKomati

IZINHLELO	INANI	R/ngetani lomoba
Uhlelo 1: Kwenyuswa inani elikhokhelwa abalimi abamnyama abalima ngokuncane ihambisane nenani lentengo encono yasekhaya	R 60m	R32
Uhlelo 2: Kuqalwa uhlelo lokukhokhela abalimi abamnyama abalima ngokuphakathi nendawo ngenani lentengo enconoyasekhaya	R 35m	R23
Uhlelo 3: Kuhlangabezwana nezindleko zokuthutha umoba zabalimi abamnyama abalima ngokuncane	R 20m	R8
Uhlelo 4: Abalimi bomoba abamnyama abalima ngokuncane bakhokhelwa izindleko zembewu ewuhlobo olufanele	R 20m	R11
Uhlelo 5: Abalimi abamnyama abalima ngokuncane bazolekelwa ukukhokha amalevi obulungu	R 7m	R4
Uhlelo 6: Inhlangano yabalimi abamnyama esanda kuqala ilekelelwa ngemali yezindleko zokukhulisa inhlangano	R 10m	R3
Uhlelo 7: Kukhushulwa inani elibekelwe ukuqeqesha abalimi bomoba abamnyama ngokusebenzisa isikhwama se-Grower Development Account (GDA)	R10m	R4
Uhlelo 8: Kwakhiwa uhlelo lwemboni lokushesha imizamo yokwandisa amathuba emisebenzi eyenzelwe intsha nabesifazane.	R 10m	
ISAMBA	R172m	

Loluhlelo luthunyelwe imboni ekomididini lasePhalamende lezezimboni nohwebo (Parliamentary Portfolio Committee on Trade and Industry) ngomhlaka 11 May 2018 njengohlelo olusheshayo lokuzibophezela ezinhlelweni zoguquko

Lezizinhlelo zizoletha ukuphefumula okukhulu obekudingwa abalimi abalima ngokuncane abanjengo-Mnuz Walter Mandlazi olima eFigtree D eKomati, okuthi noma besebenza kanzima baze bakhipe umkhizizo osezingeni eliphezulu ofinyelela kumatani angu-160 ngehektha ngalinye, kodwa baqhubeka bangatholi lutho oluyinzuzo ngenxa yezindleko ezimba eqolo zokulima, nokudalwa ukulima emasimini amancane kakhulu.

Yize kusekhona abanye embonini abanokukhononda nokungabaza izovelaphi imali yokumelana nezindleko zokuletha lezinguquko, uMnuz Bruce Dunlop wakwa Tongaat Hullet uyala ngokuthi imali efakwa kulezizinhlelo zezinguquko mayingabhekwa njengezindleko, kodwa njengetshalwayo ezoba nenzuzo enkulu ngokwenza lemboni ihambisane nenqubo yezwe yokuletha izinguquko ezweni. Kanti loku kuyoba nemiphumela emihle esikhathini esizayo. "Yize kwaziwa ukuthi esikhathini samanje, abalimu abancane yibo abashayeka kakhulu, ukuzinikezela ezinguqukweni akumele kube yinto eyenziwa ngoba kwabelwana umnotho kuphela, kodwa akwenziwe noma ngabe kusho ukuthi kumele kwabelwane nangobuhlungu", kusho uBruce Dunlop



Mr Aubrey Gabriel, SAFDA Industrial Affairs Manager

Semukela usomnotho omusha kwaSAFDA

SAFDA isihlomule ngokuthola lowabe engusomnotho oqavile kashukela noke wasebenzela inhlangotho yakwa SA Cane Growers Association uMnuz Aubrey Gabriel. UAubrey isifundiswa esiza nolwazi olujulile kanye naluqoqe iminyaka engamashumi amane esebenza emkhakheni wezomnotho nezibalo. Engu-20 yaleminyaka uyichithe

esebenza ngezomnotho wayo imboni yakwashukela. Kwezinye izinto azobe ebamba iqhaza kuzo ukumela uSAFDA emakomidini ehlukeni akwa-SASA, futhi abuye eluleke abaphathi bakwa-SAFDA nabalimi ngezinto ezithinta umnotho wemboni ezifana ne RV nokunye. Siyakwamukela kwikusasa lemboni, Aubrey.

Abalimi beSAFDA baseMpumalanga bakhethe ubuholi babo besifundazwe

Sfiso Mnguni, Grower Support Services Manager



Izithunywa ezazihamabele umhlangano wokukhethwa kobuholi base-Mpumalanga be SAFDA

NgoLwesihlanu 23 March balimi abangamalungu eSAFDA eMpumalanga akhetha ubuholi bawo besifundazwe. Ithimba lobuholi elakhiwe ngamalungu angu-15 lakhiwe ngabamele abalima ngokuncane kanye nabalimi bezokubuyiselwa komhlaba baseKomati naseMalalane. I-SAFDA ikuthokozela kakhulu ukuthi yonke imiphakathi engu-

8 enamasimu amakhulu kunawo wonke aphakela imishini yase Komati neMalalane ajoyine iSAFDA futhi amelelekile kulobuholi obusha besifundazwe. Inhlangotho ngayinye kwezingu-7 zabalima ngokuncane eKomati kanye naseMalalane wayemelelwe yizihambeli ezingu-5 emhlanganweni. Zonke izinhlangano zakhetha oyedwa ozozimela ekomidini lesifundazwe.

Phakathi kweminye imisebenzi esheshayo yeKomidi kuzoba ukwakha izakhiwo zabalimi kuzo zonke izindawo, ukusekela ukusungulwa kwehovisi lesifundazwe le-SAFDA eMpumalanga, ukusekela abasebenzi behhovisi kanye nokulungiselela ukwethulwa ngokusemthethweni kuka-SAFDA eMpumalanga.

Ukwamukeleka kukaSAFDA

Kuyimpumelelo yemboni yonkana

Sizezikhathi ezintsha embonini kaShukela, nokubonakala ngezimpawu zobumbano nokuzinikela kabusha ezinguqukweni. Lolushintsho lufike nokuthathwa kwe SAFDA njengenhlangano emqoka embonini ka

Shukela. Loku kwabonakala emicimbini wokwethulwa ngokusemthethweni kwe-SAFDA eyayibanjwe ngomhlaka 26 January 2017, lapho kwabokhona izihambeli eziningi embizweni eyayise Gingingindlovu Sports Ground kanye

nase mcimbini wesidlo sakusihlwa owawuse-Elangeni Hotel eThekwini. Ukwamukelwa kuka SAFDA embonini kashukela, kwachazwa izikhulumi eziningi njengokunqoba kwemboni yonkana.



Siyabonga Madlala
Executive Chairman of SAFDA



Bheki Cele
Former Deputy of
Agriculture Forestry and Fisheries



Candith Mashego-Dlamini
Deputy Minister of Rural
Development and Land Reform



Joan-Marie Fubbs
Chairperson of Parliamentary Portfolio
Committee on Trade & Industry



Themba Mthembu
KZN MEC for
Agriculture and Rural Development



Hans Hackmann
SASA Vice Chairman



Charl Senekal
Mega Farmer



Adv. Mbili
Chief Director - RLCC

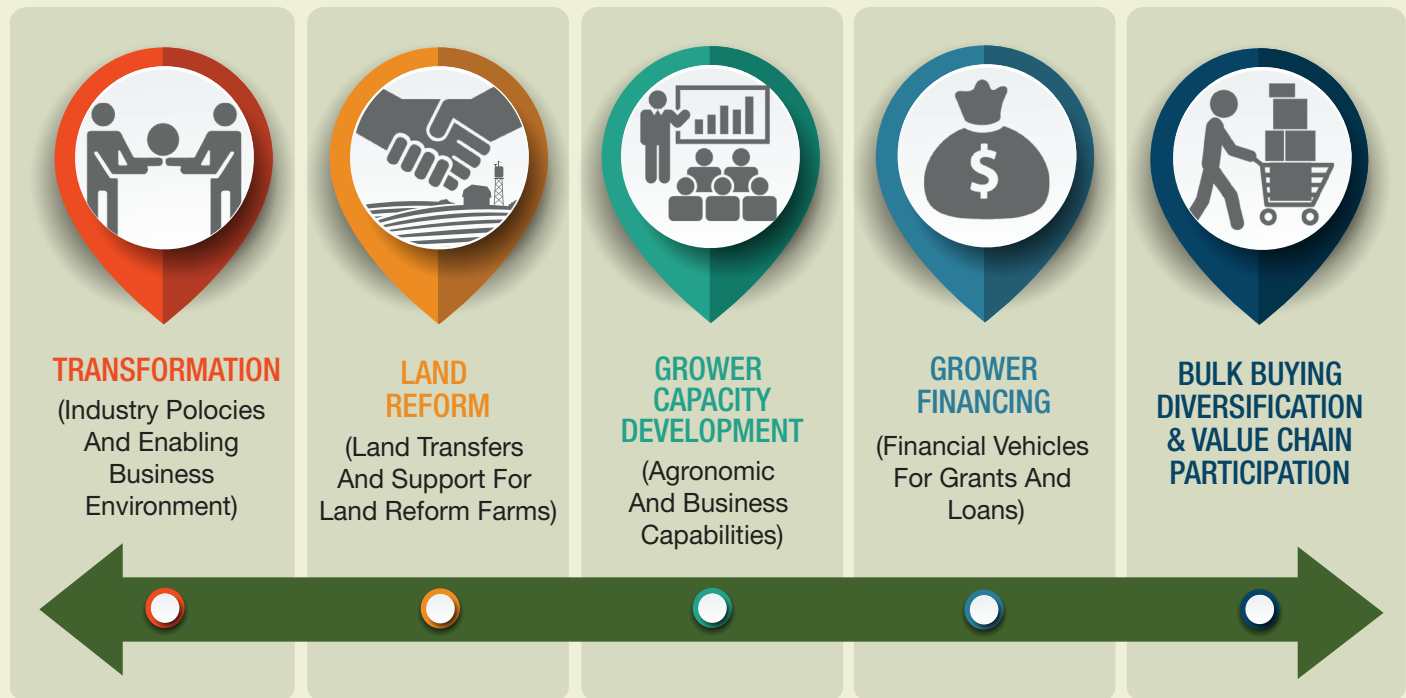


Bruce Dunlop
Tongaat Hullett



Izinsika zamasu namaqhinga kaSAFDA

Sfiso Mnguni, Grower Support Services Manager



Njengoba iSAFDA ibheke emhlanganweni wayo omqoka wokuhlenganisa amasu namaqhinga azolawula ukusebenza kwalenhlangano ukuya phambili, sikwethulela izinto ezinhlanu lenhlangano egxile kuzo okuyizo eziyisithombe salamasu namaqhinga okwamanje:

Ushintsho

Isimo esilungile sokusebenza embonini nesivumela abalimi abamnyama ukubamba iqhaza leibonakalayo okwangempela ebhizinisini siyosiza lelmboni ikwazi ukwelekelela imizamo yezwe yokwedlulisela amandla omnotho nakulabo ababebandlululwa ngesikhathi esidlule. Ukwamukeleka kweSAFDA embonini kuyisiqalo esibalulekile, kodwa kuvula nje umnyango wesimo esikahle sokuthi umsebenzi wangempela wezinto ezibambekayo uqale ukukhombisa isithombe semboni kashukela yaseNingizimu Africa eguqukayo.

Ukwelekelela izinhlelo zokubuyiswa komhlaba

ISAFDA ingumshayeli onekhono futhi kungathenjela kuyo ukwakha nokushayelela amasu, namaqhinga obudlelwano phakathi kwabalimi abakhulu, abezokubuyiswa komhlaba kanye babalimi abalima ngokuncane nabezimbongi zezolimo. Esikhakthini esikuso manje sokungaqiniseki ngemigomo elawula izinhlelo

zokubuyiswa komhlaba, inhlangano yethu izimisele ngokuzuzisa wonke amalunga ayo emikhakha nezinhlanga eahlukene. I

Ukuthuthukiswa kwamakhono abalimi

Uhlelo lweSAFDA oluphelelisiwe lokuthuthukisa amakhono kubalimi lubhekiswe ekuthuthukisweni kwamakhono ezolimo, ubuholi nokuphathwa kwamabhizinisi kuwo wonke amalungu ethu. Izinhlelo ngaphansi kwalomkhakha kuhlenganisa nosizo oluyotholakala esikhwameni sezokuthuthukisa abalimi semboni iGrower Development Fund ukuze kuqeqeshwe abalimi abamnyama.

Ukwelekelela Abalimi Ngezimali

Ukufinyelela kwezezimali zentuthuko kuyinselelo eqhubekayo yabalimi. I-SAFDA iphezu komsebenzi wokusungula inhlangano yezimali yokuthuthukiswa kwabalimi nokungeyabo ngokuphelele (100%) abalimi. Kunconywa izindlela ezididiyela

imalimboleko nemixhaso ukuhlenganisa koulawula uhlelo.

Ukuthenga Ngokuhlenganyela, Izitshalo Namabhizinisi Ehlukene Kanye Nokuhlomula Kuyo Yonke Imisebenzi Ekhona Embonini

ISAFDA isebenzela ukuqinisekisa ukuthi abalimi babamba iqhaza ngokugcwele kuyo yonke imisebenzi ekhona ibhizinisini lomoba noshukela. Lokhu sikwenza ngokwakha izinkampani zabalimi ezizothenga ngokuningi zithengela bonke abalimi izidingo zokulima, ikakhulukazi omanyolo amakhemikhali namathuluzi kanye nokunikezela ngemisebenzi yasemasimini nokuthuthwa komoba. Ukuqinisekisa ukuthi amabhizinisi abalimi ama njalo angashabalali kuzoqinisekiswa ukuthi abalimi batshale nezinye izitshalo ngaphandle komoba.

Umhlangano wamasu namaqhinga ohleliwe uyoqinisekisa ukuthi inhlangano iqhamuka nemigomo ezolawula indlela ezohanjwa ukufinyelela kulokhu inhlangano efuna ukukuzuza.

Abalimi bakwaSwayimane bathokozela u-R2.6 million owusizo loMnyango wakwa-DRDLR

Sfiso Mnguni, Grower Support Services Manager



Emuva: Mfu. Bhekukwenza Ngcobo, Counsellor Londi Zondi (Ward 11), Muziwemali Thusi (SAFDA MAC ne-Siphapheme Co-op Chairman), Patric Bhengu (SAFDA), Mfanufikile Mbatha (Inzwakele Co-op Chairman), MB Mthembu (SAFDA), Bheki Zondi (Mshwati Municipality LED Manager), Nontobeko Phungula (DRDLR), Nathi Msweli (SAFDA), Silondiwe Radebe (DRDLR)

Phambili: Mrs Nkwanyana (Udondolo Trust Accountants), Sbusiso Nkwanyana (Udondolo Trust accountants), Mzubanzi Buthelezi (Ekupholeni Traditional Leadership Counsellor), Inkosi Gcumisa, Counsellor Nhlakanipho Gasa (Ward 8)

Abalimi abalima ngokuncane bakwa Swayimane basanda kubuthana embizweni ebiseholo lase Nonco bemukela ngokusemthethweni uxhaso lwezimali oluvela eMnyangweni wakwa Rural Development and Land Reform (DRDLR), nobese kwiyinxenye yesibili yemali yokubaxhasa.

Loluxhaso luyinxenye yesamba lesingu- R9 million abnikwa yona nguMnyango ngonyaka ka-2015 ukuze bazithuthukise ngokutshala umoba endaweni yakwaSwayimane. Kulesi sigaba sesibili, uSiphapheme Co-operative uthole u-R1,700,000

kwathi i-Inzwakele yathola-R800,000. Ngesikhathi emukela loluxhaso uSihlalo weSAFDA Mill Area Committee (MAC) ebe futhi enguSihlalo we-Siphapheme Co-operative, uMuziwemali Thusi uthe: "Ngenxa loluxhaso loMnyango selube nomphumela wokukhuphula umkhqiqizo kulendawo usuka ku-16000 wamatani waya ku-60000 wamatani ngonyaka"

Oyinkosi yesizwe kulendawo iNkosi Gcumisa ubonge uMnyango ngokusiza umphakathi wakhe, wabe edlulisa isicelo kuMnyango Wezokuthuthukiswa Kwezindawo

ZaseMakhaya nokubuyiswa koMhlaba ukuthu wenze umhlaba utholakale kubantu, njengalokho umhlaba ongaphansi kwamakhosi unganele. Imizwa efanayo yabelwe oyikhansela lakwa-Ward 8 uMnuz Gasa, othe ubuholi buzokweseka yonke imizamo yokuthuthukisa umphakathi waseSwayimane. Ngokusho kohlelo lwebhizinisi, izimali zizosetshenziselwa ukutshala, ukuthenga izinsizakusebenza kanye nesakhiwo seshede. UMasipala waseMshwati usevele usenikele ngendawo okuzokwakhiwa

Bangaphezu kuka-600 abalimi abazoqeqeshwa ngohlelo lwe-SAFDA

Ukuqeqeshwa emikhakheni eyahlukene kwezolimo kulonyaka wezolimo ka 2018-19. Lokhu kwenziwe kwaba impumelelo imboni yakwashukela ngokwamukela isicelo soxhaso se-

SAFDA ngemali elinganiselwa ku-R1.1 million ekuqeqesheni abalimi abamnyama. Izifundo zihlanganisa phakathi kwezinye, izifundo zamakhono ezolimo, i-Junior ne Senior

Certificate kwezokulima umoba. Uqeqesho luzokwenziwa abesikhungo sakwa-Shukela Training Centre kanye ne-South African Sugar Research Institute (SASRI).